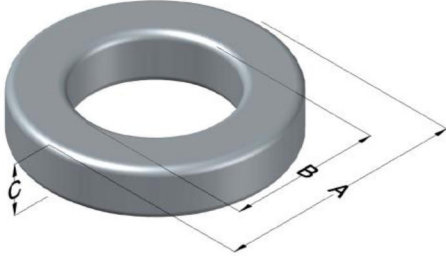




0055033A2

110 Delta Drive
 Pittsburgh, PA 15238
 NAFTA Sales: (1)800-245-3984
 HK Sales : (852)3102-9337
 magnetics@spang.com
 www.mag-inc.com



| MPP Permeability (μ) | A_L (nH/T ²) | Core Marking | | | Coating Color |
|----------------------------|----------------------------|--------------|-------------|------------------|---------------|
| | | Lot Number | Part Number | Inductance Grade | |
| 14 | 6 \pm 8% | XXXXXX | 033A2 | N/A | Gray |

| Dimensions | Uncoated | | Coated Limits | | | Packaging |
|------------|----------|-------|---------------|-------|-----|--|
| | (mm) | (in) | (mm) | (in) | | |
| OD (A) | 7.87 | 0.310 | 8.51 | 0.335 | max | Bulk Pack 4 bags/box Box Qty= 10,000 pcs |
| ID (B) | 3.96 | 0.156 | 3.45 | 0.136 | min | |
| HT (C) | 3.18 | 0.125 | 3.81 | 0.150 | max | |

| Electrical Characteristics | | | Physical Characteristics | | | | | | |
|---|------------------------|-----|---|-------------------------|---|---|---------------------------------|--|------------|
| Watt Loss @ 100 kHz, 100mT max(mW/cm ³) | DC Bias min (oersteds) | | Voltage Breakdown wire to wire min (V _{AC}) | Break Strength min (kg) | Window Area W _A (mm ²) | Cross Section A _e (mm ²) | Path Length L _e (mm) | Volume V _e (mm ³) | Weight (g) |
| | 80% | 60% | | | | | | | |
| 1600 | 215 | 270 | 1250 | 10.0 | 9.35 | 5.99 | 17.9 | 107 | 0.7360 |

| Winding Information | | | | | Temperature Rating | |
|-------------------------|------|----------------|------|---------------------------------|--------------------|--|
| Winding Length Per Turn | | | | Wound Coil Dimensions (mm) | | Curie Temp: 460°C |
| Winding Factor | (mm) | Winding Factor | (mm) | 40% Winding Factor | | Coating Temp (Continuous up to): 200°C |
| | | | | OD | 9.07 | Notes: |
| 0% | 12.7 | 40% | 14.5 | HT | 4.93 | |
| | | | | Completely Full Window | | |
| 20% | 13.6 | 45% | 14.7 | Max HT | 6.73 | |
| 25% | 13.8 | 50% | 15.0 | Surface Area (mm ²) | | |
| 30% | 14.0 | 60% | 15.5 | Unwound Core | 240 | |
| 35% | 14.3 | 70% | 16.1 | 40% Winding Factor | 310 | |

Typical DC Bias Performance

