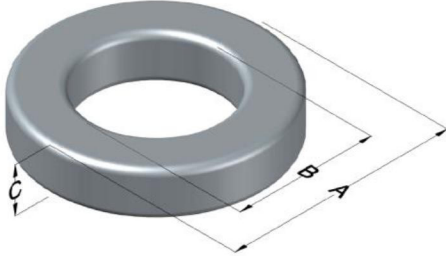




**0055092A2**

110 Delta Drive  
 Pittsburgh, PA 15238  
 NAFTA Sales: (1)800-245-3984  
 HK Sales : (852)3102-9337  
 magnetics@spang.com  
 www.mag-inc.com



MPP Permeability ( $\mu$ )	$A_L$ (nH/T <sup>2</sup> )	Core Marking			Coating Color
		Lot Number	Part Number	Inductance Grade	
14	20 $\pm$ 8%	XXXXXX	55092A2	N/A	Gray

Dimensions	Uncoated		Coated Limits			Packaging
	(mm)	(in)	(mm)	(in)		
OD (A)	46.74	1.840	47.63	1.875	max	Cardboard cut-outs Box Qty= 120 pcs
ID (B)	28.70	1.130	27.89	1.098	min	
HT (C)	15.24	0.600	16.13	0.635	max	

Electrical Characteristics			Physical Characteristics						
Watt Loss @ 100 kHz, 100mT max(mW/cm <sup>3</sup> )	DC Bias min (oersteds)		Voltage Breakdown wire to wire min (V <sub>AC</sub> )	Break Strength min (kg)	Window Area W <sub>A</sub> (mm <sup>2</sup> )	Cross Section A <sub>e</sub> (mm <sup>2</sup> )	Path Length L <sub>e</sub> (mm)	Volume V <sub>e</sub> (mm <sup>3</sup> )	Weight (g)
	80%	70%							
1600	215	270	3000	99	610	134	116	15,600	100

Winding Information					Temperature Rating	
Winding Length Per Turn				Wound Coil Dimensions (mm)		Curie Temp: 460 °C
Winding Factor	(mm)	Winding Factor	(mm)	40% Winding Factor		Coating Temp (Continuous up to): 200 °C
				OD	52.0	Notes:
				HT	24.9	
				Completely Full Window		
0%	52.0	40%	66.4	Max OD	66.3	
20%	59.1	45%	68.2	Max HT	39.8	
25%	61.0	50%	70.4	Surface Area (mm <sup>2</sup> )		
30%	62.2	60%	74.7	Unwound Core	6,100	
35%	64.5	70%	79.5	40% Winding Factor	9,800	

