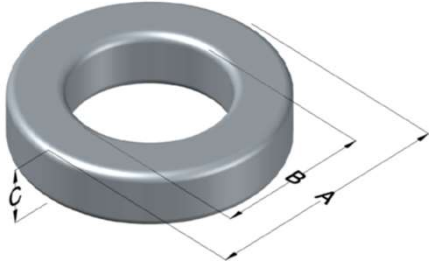




**0055303A2**

110 Delta Drive  
 Pittsburgh, PA 15238  
 NAFTA Sales: (1)800-245-3984  
 HK Sales : (852)3102-9337  
 magnetics@spang.com  
 www.mag-inc.com



MPP Permeability ( $\mu$ )	$A_L$ (nH/T <sup>2</sup> )	Core Marking			Coating Color
		Lot Number	Part Number	Inductance Grade	
19	14 $\pm$ 8%	XXXXXX	55303A2	N/A	Grey

Dimensions	Uncoated		Coated Limits			Packaging
	(mm)	(in)	(mm)	(in)		
OD (A)	22.86	0.900	23.62	0.930	max	Bulk Pack 4 bags/box Box Qty= 1000 pcs
ID (B)	13.97	0.550	13.34	0.525	min	
HT (C)	7.62	0.300	8.38	0.330	max	

Electrical Characteristics			Physical Characteristics						
Watt Loss @ 100kHz, 100mT max (mW/cm <sup>3</sup> )	DC Bias min (oersteds)		Voltage Breakdown wire to wire min (V <sub>AC</sub> )	Break Strength min (kg)	Window Area W <sub>a</sub> (mm <sup>2</sup> )	Cross Section A <sub>e</sub> (mm <sup>2</sup> )	Path Length L <sub>e</sub> (mm)	Volume V <sub>e</sub> (mm <sup>3</sup> )	Weight (g)
	80%	50%							
1600	190	320	2000	39.0	140	31.7	56.7	1,800	12.4

Winding Information					Temperature Rating		
Winding Length Per Turn				Wound Coil Dimensions (mm)			Curie Temp: 460°C
Winding Factor	(mm)	Winding Factor	(mm)	40% Winding Factor		Max OD	Coating Temp (Continuous up to): 200°C
				OD	HT		
0%	27.0	40%	33.9	Completely Full Window	Max OD	27.8	Notes:
20%	30.5	45%	35.0		Max HT	18.2	
25%	31.3	50%	35.9	Surface Area (mm <sup>2</sup> )			
30%	32.0	60%	38.0	Unwound Core		1,600	
35%	33.1	70%	40.4	40% Winding Factor		2,400	

