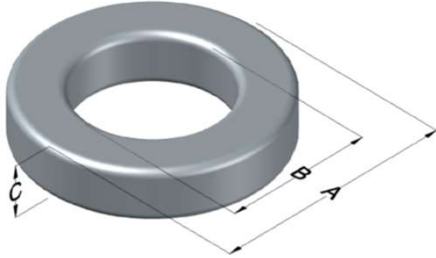




0055847A2

110 Delta Drive
 Pittsburgh, PA 15238
 NAFTA Sales: (1)800-245-3984
 HK Sales : (852)3102-9337
 magnetics@spang.com
 www.mag-inc.com



MPP Permeability (μ)	A_L (nH/T ²)	Core Marking			Coating Color
		Lot Number	Part Number	Inductance Grade	
40	21 \pm 8%	XXXXXX	55847A2	N/A	Grey

Dimensions	Uncoated		Coated Limits			Packaging
	(mm)	(in)	(mm)	(in)		
OD (A)	20.32	0.800	21.08	0.830	max	Bulk Pack 4 bags/box Box Qty=1600 pcs
ID (B)	12.70	0.500	12.07	0.475	min	
HT (C)	6.35	0.250	7.11	0.280	max	

Electrical Characteristics			Physical Characteristics						
Watt Loss @ 100kHz, 100mT max (mW/cm ³)	DC Bias min (oersteds)		Voltage Breakdown wire to wire min (V _{AC})	Break Strength min (kg)	Window Area W _a (mm ²)	Cross Section A _e (mm ²)	Path Length L _e (mm)	Volume V _e (mm ³)	Weight (g)
	800	80%							
	80	135	2000	29.0	114	22.1	50.9	1,120	8.87

Winding Information					Temperature Rating	
Winding Length Per Turn				Wound Coil Dimensions (mm)		Curie Temp: 460°C
Winding Factor	(mm)	Winding Factor	(mm)	40% Winding Factor	OD	23.5
					HT	10.7
0%	23.2	40%	29.3	Completely Full Window	Max OD	24.7
20%	26.3	45%	30.3		Max HT	15.5
25%	27.0	50%	31.1	Surface Area (mm ²)		
30%	27.8	60%	32.9	Unwound Core		1,200
35%	28.6	70%	35.1	40% Winding Factor		1,800
Notes:						
Coating Temp (Continuous up to): 200°C						

