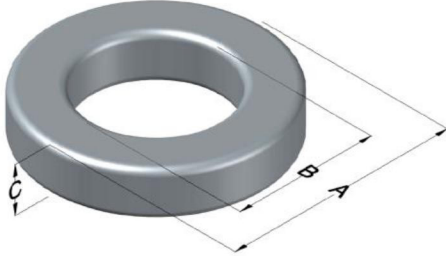




**0058075A2**

110 Delta Drive  
 Pittsburgh, PA 15238  
 NAFTA Sales: (1)800-245-3984  
 HK Sales : (852)3102-9337  
 magnetics@spang.com  
 www.mag-inc.com



MPP Permeability ( $\mu$ )	$A_L$ (nH/T <sup>2</sup> )	Core Marking			Coating Color
		Lot Number	Part Number	Inductance Grade	
14	35 $\pm$ 8%	XXXXXX	58075A2	N/A	Khaki

Dimensions	Uncoated		Coated Limits			Packaging
	(mm)	(in)	(mm)	(in)		
OD (A)	68.00	2.677	69.42	2.733	max	Cardboard cut-outs Box Qty= 35 pcs
ID (B)	35.99	1.417	34.67	1.365	min	
HT (C)	19.99	0.787	21.41	0.843	max	

Electrical Characteristics			Physical Characteristics						
Watt Loss @ 100 kHz, 100mT max (mW/cm <sup>3</sup> )	DC Bias min (oersteds)		Voltage Breakdown wire to wire min (V <sub>AC</sub> )	Break Strength min (kg)	Window Area W <sub>A</sub> (mm <sup>2</sup> )	Cross Section A <sub>e</sub> (mm <sup>2</sup> )	Path Length L <sub>e</sub> (mm)	Volume V <sub>e</sub> (mm <sup>3</sup> )	Weight (g)
	80%	70%							
2600	180	385	3000	181.0	945	314	158	49,700	336

Winding Information					Temperature Rating	
Winding Length Per Turn				Wound Coil Dimensions (mm)		Curie Temp: 460°C
Winding Factor	(mm)	Winding Factor	(mm)	40% Winding Factor	OD	74.7
					HT	37.4
0%	77.6	40%	95.1	Completely Full Window	Max OD	92.7
20%	86.6	45%	98.0		Max HT	50.6
25%	88.6	50%	101	Surface Area (mm <sup>2</sup> )		
30%	90.7	60%	106	Unwound Core		12,700
35%	93.2	70%	112	40% Winding Factor		19,000
Coating Temp (Continuous up to): 200°C						
Notes:						

