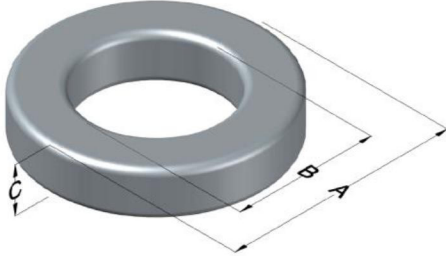




0058150A2

110 Delta Drive
 Pittsburgh, PA 15238
 NAFTA Sales: (1)800-245-3984
 HK Sales : (852)3102-9337
 magnetics@spang.com
 www.mag-inc.com



High Flux Permeability (μ)	A_L (nH/T ²)	Core Marking			Coating Color
		Lot Number	Part Number	Inductance Grade	
125	35 ± 8%	N/A	N/A	N/A	Khaki

Dimensions	Uncoated		Coated Limits			Packaging
	(mm)	(in)	(mm)	(in)		
OD (A)	3.94	0.155	4.58	0.180	max	Bulk Pack 5 vials/box Box Qty= 7500 pcs
ID (B)	2.24	0.088	1.72	0.068	min	
HT (C)	2.54	0.100	3.18	0.125	max	

Electrical Characteristics			Physical Characteristics						
Watt Loss @ 100 kHz, 100mT max(mW/cm ³)	DC Bias min (Oersteds)		Voltage Breakdown wire to wire min (V _{AC})	Break Strength min (kg)	Window Area W _A (mm ²)	Cross Section A _e (mm ²)	Path Length L _e (mm)	Volume V _e (mm ³)	Weight (g)
	80%	50%							
1000	46.0	81.0	*-	1.5	2.32	2.11	9.42	19.9	0.2000

Winding Information					Temperature Rating		
Winding Length Per Turn				Wound Coil Dimensions (mm)		Curie Temp: 460°C	
Winding Factor	(mm)	Winding Factor	(mm)	40% Winding Factor		Coating Temp (Continuous up to): 200°C	
				OD	4.85	Notes:	
0%	9.20	40%	10.1	HT	3.73		
				Completely Full Window			Max OD
20%	9.64	45%	10.2	Max HT	4.75	*No voltage breakdown min for A2 or A7 with OD ≤4.65mm	
25%	9.76	50%	10.3	Surface Area (mm ²)			
30%	9.84	60%	10.6	Unwound Core			90
35%	9.98	70%	10.9	40% Winding Factor			110

