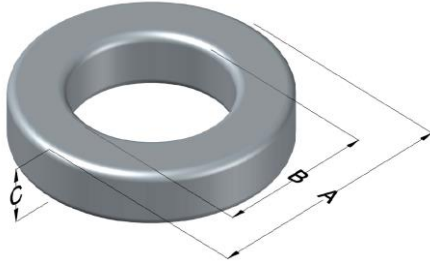




0058717A2X2

110 Delta Drive
 Pittsburgh, PA 15238
 NAFTA Sales: (1)800-245-3984
 HK Sales : (852)3102-9337
 magnetics@spang.com



High Flux Permeability (μ)	A_L (nH/T ²)	Core Marking			Coating Color
		Lot Number	Part Number	Inductance Grade	
26	64 ± 8%	XXXXXX	58717A2X2	N/A	Khaki

Dimensions	Uncoated		Coated Limits			Packaging
	(mm)	(in)	(mm)	(in)		
OD (A)	50.80	2.000	51.99	2.047	max	Cardboard cut-outs Box Qty = TBD
ID (B)	31.75	1.250	30.34	1.194	min	
HT (C)	26.92	1.060	28.31	1.115	max	

Electrical Characteristics			Physical Characteristics						
Watt Loss @ 100kHz, 100mT max (mW/cm ³)	DC Bias min (oersteds)		Voltage Breakdown wire to wire min (V _{AC})	Break Strength min (kg)	Window Area W _a (mm ²)	Cross Section A _e (mm ²)	Path Length L _e (mm)	Volume V _e (mm ³)	Est. Weight (g)
	80%	50%							
1250	200	375	3000	93.0	752	250	127	31,800	244

Winding Information					Temperature Rating	
Winding Length Per Turn				Wound Coil Dimensions (mm)		Curie Temp: 500°C
Winding Factor	(mm)	Winding Factor	(mm)	40% Winding Factor		Coating Temp (Continuous up to): 200°C
				OD	58.4	
				HT	37.9	Notes:
				Completely Full Window		
				Max OD	61.6	
				Max HT	50.7	
0%	78.3	40%	93.8	Surface Area (mm ²)		
20%	86.1	45%	96.1	Unwound Core		10,000
25%	88.0	50%	98.3	40% Winding Factor		14,000
30%	89.5	60%	103			
35%	92.0	70%	108			

