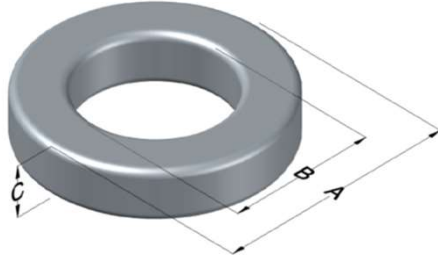




**0058726A2X2**

110 Delta Drive  
 Pittsburgh, PA 15238  
 NAFTA Sales: (1)800-245-3984  
 HK Sales : (852)3102-9337  
 magnetics@spang.com  
 www.mag-inc.com



High Flux Permeability ( $\mu$ )	$A_L$ (nH/T <sup>2</sup> )	Core Marking			Coating Color
		Lot Number	Part Number	Inductance Grade	
60	350 $\pm$ 8%	XXXXXX	58726A2X2	N/A	Khaki

Dimensions	Uncoated		Coated Limits			Packaging
	(mm)	(in)	(mm)	(in)		
OD (A)	50.55	1.990	51.80	2.040	max	Cardboard cut-outs Box Qty = 30 pcs
ID (B)	24.77	0.975	23.70	0.921	min	
HT (C)	41.66	1.640	42.96	1.690	max	

Electrical Characteristics			Physical Characteristics						
Watt Loss @ 100kHz, 100mT max (mW/cm <sup>3</sup> )	DC Bias min (oersteds)		Voltage Breakdown wire to wire min (V <sub>AC</sub> )	Break Strength min (kg)	Window Area W <sub>a</sub> (mm <sup>2</sup> )	Cross Section A <sub>e</sub> (mm <sup>2</sup> )	Path Length L <sub>e</sub> (mm)	Volume V <sub>e</sub> (mm <sup>3</sup> )	Est. Weight (g)
	80%	50%							
900	90	170	3000	95.0	452	531	113.5	60,300	476

Winding Information					Temperature Rating	
Winding Length Per Turn				Wound Coil Dimensions (mm)		Curie Temp: 500°C
Winding Factor	(mm)	Winding Factor	(mm)	40% Winding Factor	OD	56.6
					HT	50.1
0%	114	40%	126	Completely Full Window	Max OD	56.6
20%	120	45%	128		Max HT	59.7
25%	122	50%	130	Surface Area (mm <sup>2</sup> )		
30%	123	60%	133	Unwound Core	13,000	
35%	125	70%	137	40% Winding Factor	16,000	
Coating Temp (Continuous up to): 200°C						
Notes:						

