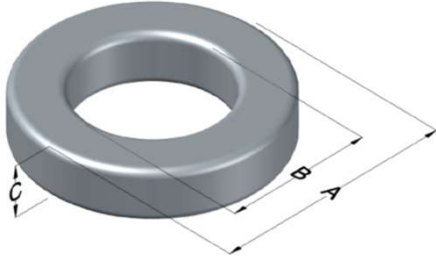




0058744A2

110 Delta Drive
 Pittsburgh, PA 15238
 NAFTA Sales: (1)800-245-3984
 HK Sales : (852)3102-9337
 magnetics@spang.com
 www.mag-inc.com



High Flux Permeability (μ)	A_L (nH/T ²)	Core Marking			Coating Color
		Lot Number	Part Number	Inductance Grade	
19	64 ± 8%	XXXXXX	58744A2	N/A	Khaki

Dimensions	Uncoated		Coated Limits			Packaging
	(mm)	(in)	(mm)	(in)		
OD (A)	74.09	2.917	75.21	2.961	max	Cardboard cut-outs Box Qty= 24 pcs
ID (B)	45.29	1.783	44.40	1.748	min	
HT (C)	35.00	1.378	35.92	1.414	max	

Electrical Characteristics			Physical Characteristics						
Watt Loss @ 100kHz, 100mT max (mW/cm ³)	DC Bias min (oersteds)		Voltage Breakdown wire to wire min (V _{AC})	Break Strength min (kg)	Window Area W _a (mm ²)	Cross Section A _e (mm ²)	Path Length L _e (mm)	Volume V _e (mm ³)	Weight (g)
	80%	50%							
1800	240	475	3000	227.0	1,550	498	183.8	91,600	497

Winding Information					Temperature Rating	
Winding Length Per Turn				Wound Coil Dimensions (mm)		Curie Temp: 500°C
Winding Factor	(mm)	Winding Factor	(mm)	40% Winding Factor		Coating Temp (Continuous up to): 200°C
				OD	84.4	Notes:
0%	103	40%	125	HT	49.7	
				Completely Full Window		
20%	114	45%	129	Max HT	68.1	
25%	117	50%	132	Surface Area (mm ²)		
30%	119	60%	139	Unwound Core	19,000	
35%	123	70%	147	40% Winding Factor	28,000	

