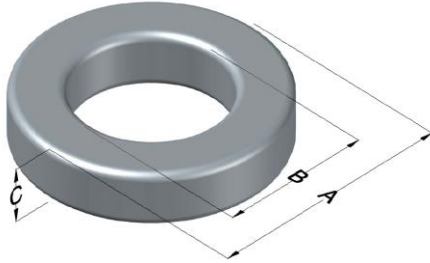




0070059A7

110 Delta Drive
 Pittsburgh, PA 15238
 NAFTA Sales: (1)800-245-3984
 HK Sales : (852)3102-9337
 magnetics@spang.com



Kool M μ Ultra Permeability (μ)	A _L (nH/T ²)	Core Marking			Coating Color
		Lot Number	Part Number	Inductance Grade	
60	42 ± 8%	XXXXXX	70059A7	N/A	Black

Dimensions	Uncoated		Coated Limits			Packaging
	(mm)	(in)	(mm)	(in)		
OD (A)	22.86	0.900	23.62	0.930	max	Bulk Pack 4 bags/box Box Qty= 1000 pcs
ID (B)	13.97	0.550	13.34	0.525	min	
HT (C)	7.62	0.300	8.38	0.330	max	

Electrical Characteristics			Physical Characteristics						
Watt Loss @ 100kHz, 100mT max (mW/cm ³)	DC Bias min (oersteds)		Voltage Breakdown wire to wire min (V _{AC})	Break Strength min (kg)	Window Area W _a (mm ²)	Cross Section A _e (mm ²)	Path Length L _e (mm)	Volume V _e (mm ³)	Est. Weight (g)
	80%	50%							
250	45	100	2000	39.0	140	31.7	56.7	1,800	11.4

Winding Information					Temperature Rating	
Winding Length Per Turn				Wound Coil Dimensions (mm)		Curie Temp: 500°C
Winding Factor	(mm)	Winding Factor	(mm)	40% Winding Factor		Coating Temp (Continuous up to): 200°C
				OD	26.4	Notes:
0%	27.0	40%	33.9	HT	12.6	
				Completely Full Window		
20%	30.5	45%	35.0	Max HT	18.2	
25%	31.3	50%	35.9	Surface Area (mm ²)		
30%	32.0	60%	38.0	Unwound Core	1,600	
35%	33.1	70%	40.4	40% Winding Factor	2,400	

