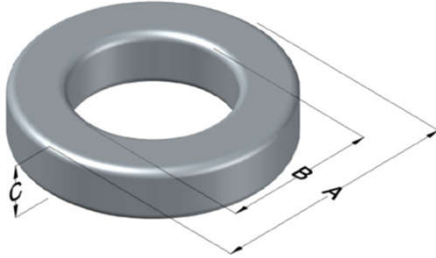




**0078089A7**

110 Delta Drive  
 Pittsburgh, PA 15238  
 NAFTA Sales: (1)800-245-3984  
 HK Sales : (852)3102-9337  
 magnetics@spang.com  
 www.mag-inc.com



XFlux Permeability ( $\mu$ )	$A_L$ (nH/T <sup>2</sup> )	Core Marking			Coating Color
		Lot Number	Part Number	Inductance Grade	
125	178 ± 8%	XXXXXX	78089A7	N/A	Brown

Dimensions	Uncoated		Coated Limits			Packaging
	(mm)	(in)	(mm)	(in)		
OD (A)	46.74	1.840	47.63	1.875	max	Cardboard cut-outs Box Qty= 120 pcs
ID (B)	28.70	1.130	27.89	1.098	min	
HT (C)	15.24	0.600	16.13	0.635	max	

Electrical Characteristics			Physical Characteristics						
Watt Loss @ 50kHz, 100mT max (mW/cm <sup>3</sup> )	DC Bias min (oersteds)		Voltage Breakdown wire to wire min (V <sub>AC</sub> )	Break Strength min (kg)	Window Area W <sub>a</sub> (mm <sup>2</sup> )	Cross Section A <sub>e</sub> (mm <sup>2</sup> )	Path Length L <sub>e</sub> (mm)	Volume V <sub>e</sub> (mm <sup>3</sup> )	Est. Weight (g)
	80%	50%							
700	27	55	3000	99.0	611	134	116	15,600	113

Winding Information					Temperature Rating	
Winding Length Per Turn				Wound Coil Dimensions (mm)		Curie Temp: 700°C
Winding Factor	(mm)	Winding Factor	(mm)	40% Winding Factor	OD	53.2
					HT	24.5
0%	52.0	40%	66.1	Completely Full Window	Max OD	56.0
20%	59.3	45%	68.4		Max HT	35.7
25%	60.9	50%	70.3	Surface Area (mm <sup>2</sup> )		
30%	62.6	60%	74.8	Unwound Core	6,200	
35%	64.6	70%	79.6	40% Winding Factor	9,500	
Notes:						
Coating Temp (Continuous up to): 200°C						

