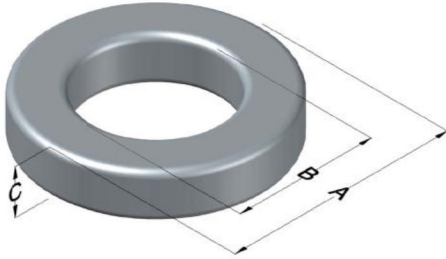




0078317A7

110 Delta Drive
 Pittsburgh, PA 15238
 NAFTA Sales: (1)800-245-3984
 HK Sales : (852)3102-9337
 magnetics@spang.com
 www.mag-inc.com



XFLUX Permeability (μ)	A _L (nH/T ²)	Core Marking			Coating Color
		Lot Number	Part Number	Inductance Grade	
19	18 ± 8%	XXXXXX	78317A7	N/A	Brown

Dimensions	Uncoated		Coated Limits			Packaging
	(mm)	(in)	(mm)	(in)		
OD (A)	35.81	1.410	36.70	1.445	max	Cardboard cut-outs Box Qty= 220 pcs
ID (B)	22.35	0.880	21.54	0.848	min	
HT (C)	10.46	0.412	11.35	0.447	max	

Electrical Characteristics			Physical Characteristics						
Watt Loss @ 50 kHz, 50mT max(mW/cm ³)	DC Bias min (oersteds)		Voltage Breakdown wire to wire min (V _{AC})	Break Strength min (kg)	Window Area W _A (mm ²)	Cross Section A _e (mm ²)	Path Length L _e (mm)	Volume V _e (mm ³)	Weight (g)
	80%	50%							
215	290	575	3000	80	364	67.8	89.8	6,090	40

Winding Information					Temperature Rating	
Winding Length Per Turn				Wound Coil Dimensions (mm)		Curie Temp: 700°C
Winding Factor	(mm)	Winding Factor	(mm)	40% Winding Factor		Coating Temp (Continuous up to): 200°C
				OD	40.2	Notes:
				HT	18.4	
				Completely Full Window		
				Max OD	51.1	
				Max HT	29.6	
				Surface Area (mm ²)		
				Unwound Core		3,400
				40% Winding Factor		5,700

