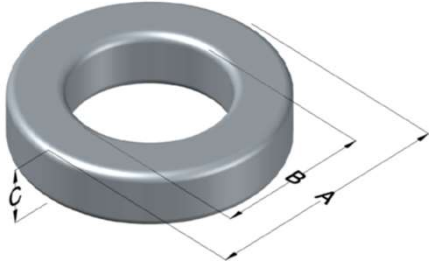




0079354A7

110 Delta Drive
 Pittsburgh, PA 15238
 NAFTA Sales: (1)800-245-3984
 HK Sales : (852)3102-9337
 magnetics@spang.com
 www.mag-inc.com



Kool M μ MAX Permeability (μ)	A _L (nH/T ²)	Core Marking			Coating Color
		Lot Number	Part Number	Inductance Grade	
90	76 \pm 8%	XXXXXX	79354A7	N/A	Black

Dimensions	Uncoated		Coated Limits			Packaging
	(mm)	(in)	(mm)	(in)		
OD (A)	23.57	0.928	24.33	0.958	max	Bulk Pack 4 bags/box Box Qty= 720 pcs
ID (B)	14.40	0.567	13.77	0.542	min	
HT (C)	8.89	0.350	9.65	0.380	max	

Electrical Characteristics			Physical Characteristics						
Watt Loss @ 100kHz, 100mT max (mW/cm ³)	DC Bias min (oersteds)		Voltage Breakdown wire to wire min (V _{AC})	Break Strength min (kg)	Window Area W _a (mm ²)	Cross Section A _e (mm ²)	Path Length L _e (mm)	Volume V _e (mm ³)	Weight (g)
	80%	50%							
750	25	60	2000	47.0	149	38.8	58.5	2,270	16.7

Winding Information					Temperature Rating	
Winding Length Per Turn				Wound Coil Dimensions (mm)		Curie Temp: 500°C
Winding Factor	(mm)	Winding Factor	(mm)	40% Winding Factor		Coating Temp (Continuous up to): 200°C
				OD	HT	
0%	29.9	40%	36.9	Max OD	28.5	Notes:
20%	33.5	45%	38.0			
25%	34.3	50%	38.9	Completely Full Window		
30%	35.1	60%	41.1	Max HT	19.5	
35%	36.1	70%	43.6	Surface Area (mm ²)		
Unwound Core					1,800	
40% Winding Factor					2,600	

