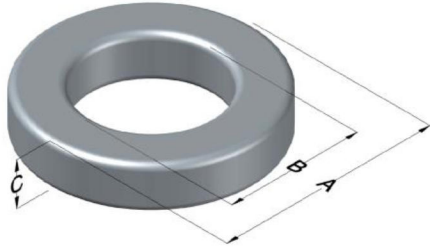




**0079382A7**

110 Delta Drive  
 Pittsburgh, PA 15238  
 NAFTA Sales: (1)800-245-3984  
 HK Sales : (852)3102-9337  
 magnetics@spang.com  
 www.mag-inc.com



Kool M $\mu$ MAX Permeability ( $\mu$ )	A <sub>L</sub> (nH/T <sup>2</sup> )	Core Marking			Coating Color
		Lot Number	Part Number	Inductance Grade	
26	19 $\pm$ 8%	XXXXXX	79382A7	N/A	Black

Dimensions	Uncoated		Coated Limits			Packaging
	(mm)	(in)	(mm)	(in)		
OD (A)	17.27	0.680	18.03	0.710	max	Bulk Pack 4 bags/box Box Qty= 2000 pcs
ID (B)	9.65	0.380	9.02	0.355	min	
HT (C)	6.35	0.250	7.11	0.280	max	

Electrical Characteristics			Physical Characteristics						
Watt Loss @ 100 kHz, 100mT max (mW/cm <sup>3</sup> )	DC Bias min (oersteds)		Voltage Breakdown wire to wire min (V <sub>AC</sub> )	Break Strength min (kg)	Window Area W <sub>A</sub> (mm <sup>2</sup> )	Cross Section A <sub>e</sub> (mm <sup>2</sup> )	Path Length L <sub>e</sub> (mm)	Volume V <sub>e</sub> (mm <sup>3</sup> )	Weight (g)
	80%	50%							
700	135	285	2000	28.0	63.8	23.2	41.4	960	5.2000

Winding Information					Temperature Rating			
Winding Length Per Turn				Wound Coil Dimensions (mm)			Curie Temp: 500°C	
Winding Factor	(mm)	Winding Factor	(mm)	40% Winding Factor		OD	19.6	Coating Temp (Continuous up to): 200°C
				HT	10.1			
0%	23.2	40%	28.0	Completely Full Window		Max OD	24.9	Notes:
				Max HT	16.3			
20%	25.6	45%	28.6	Surface Area (mm <sup>2</sup> )				
25%	26.2	50%	29.3	Unwound Core		990		
30%	26.6	60%	30.8	40% Winding Factor		1,400		
35%	27.4	70%	32.4					

