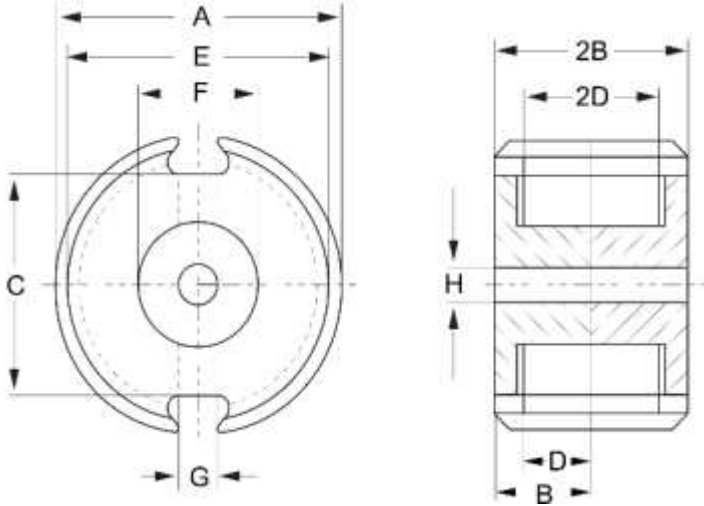


Specification for:

**0F42213UG**

110 Delta Drive  
Pittsburgh, PA 15238  
Phone: 412/696-1333  
Fax: 412/696-0333  
Email:magnetics@spang.com

**DIMENSIONS**



(mm)	Nominal:	Tol. min.:	Tol. max.:
<b>A</b>	22.0	-0.8	0.0
<b>B</b>	6.7	-0.1	+ 0.1
<b>2B</b>	13.4	-0.2	+ 0.2
<b>C</b>	15.0	-0.4	+ 0.4
<b>D</b>	4.6	0.0	+ 0.2
<b>2D</b>	9.2	0.0	+ 0.4
<b>E</b>	17.9	0.0	+ 0.6
<b>F</b>	9.4	-0.3	0.0
<b>G</b>	3.8	-0.6	+ 0.6
<b>H</b>	4.4	0.0	+ 0.3
Eff. Parameters			
<b>Ae mm<sup>2</sup></b>	<b>Amin mm<sup>2</sup></b>	<b>le mm</b>	<b>Ve mm<sup>3</sup></b>
63.4	50.9	31.5	2000

**INDUCTANCE**

AL value (nH)	Test conditions
4900 ± 25%	10 kHz, < 0.5 mT, 25 °C

**MARKING**

F UG
---------

**CORE LOSSES**

P <sub>i</sub> max	Test conditions
230 mW/cm <sup>3</sup> (0.46 W/set)	25 kHz, 200 mT, 100 °C

**NOTE**

Spec. modifications	Previous	Revised
2005-06-22	A=21.22 MIN. G=3.1 NOM. G=2.99 MIN. H=4.55±0.1  LOSSES:GENERAL F MATERIAL	A=21.2 MIN. G=3.8±0.6  H=4.4 MIN. H=4.7 MAX. LOSSES: DETAIL AS INDICATED