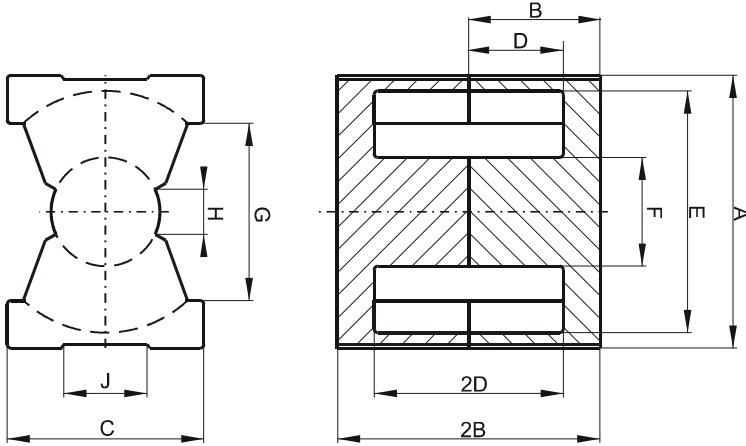


Specification for:

0F43535UG

110 Delta Drive
Pittsburgh, PA 15238
Phone: 412/696-1333
Fax: 412/696-0333
Email:magnetics@spang.com

DIMENSIONS



(mm)	Nominal:	Tol. min.:	Tol. max.:
A	36.1	-0.6	+ 0.6
B	17.35	-0.13	+ 0.13
2B	34.7	-0.25	+ 0.25
C	26.0	-0.5	+ 0.5
D	12.5	-0.15	+ 0.15
2D	25.0	-0.3	+ 0.3
E	32.0	-0.5	+ 0.5
F	14.4	-0.25	+ 0.25
G	23.5 Min.		
H	6.0 Min.		
J	11.8 Min.		
Eff. Parameters			
Ae mm²	Amin mm²	le mm	Ve mm³
190.0	162.0	86.1	16300

INDUCTANCE

AL value (nH)	Test conditions
7347 ± 25%	10 kHz, < 0.5 mT, 25 °C

MARKING

0F43535UG PXXXXX

CORE LOSSES

P _i max	Test conditions
233 mW/cm ³ (3.8 W/set)	25 kHz, 200 mT, 100 °C

NOTE

Spec. modifications	Previous	Revised
2005-06-22	B=34.49 Min. F=14.61Max. Losses: General F material	A=34.45 Min. F=14.65 Max. Losses: Detail as indicated