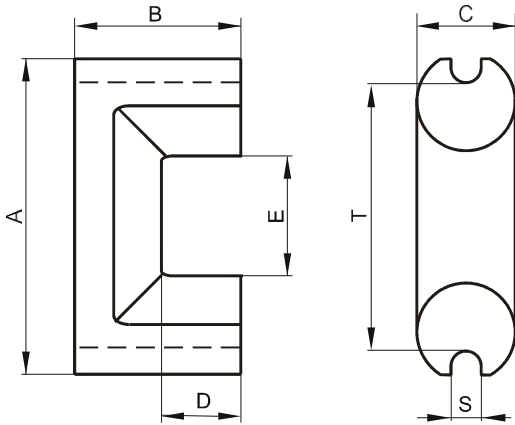


Specification for:

OF44130UC

110 Delta Drive
Pittsburgh, PA 15238
Phone: 412/696-1333
Fax: 412/696-0333
Email:magnetics@spang.com

DIMENSIONS



(mm)	Nominal:	Tol. min.:	Tol. max.:
A	41.78	-0.81	+ 0.81
B	30.5	-0.3	+ 0.3
C	11.94	-0.25	+ 0.25
D	20.8MIN		
E	18.8	-0.56	+ 0.56
S	3.18	-0.13	+ 0.13
T	34.66		
Eff. Parameters			
Ae mm ²	Amin mm ²	le mm	Ve mm ³
112.1	105.4	154.8	17346

INDUCTANCE

AL value (nH)	Test conditions
1830 ± 25%	10 kHz, < 0.5 mT, 25 °C

MARKING

F UC

CORE LOSSES

P _i max	Test conditions
213 mW/cm ³ (3.7 W/set)	25 kHz, 200 mT, 100 °C

NOTE

Spec. modifications	Previous	Revised
2005-06-22	A=42.37 MAX. A=41.55 MIN. C=11.94 MAX. E=18.42 MIN. LOSSES:GENERAL F MATERIAL	A=42.59 MAX. A=40.97 MIN. C=12.19 MAX. E=18.24 MIN. LOSSES: DETAIL AS INDICATED
2023-7-17	D=2.8 MIN.	D=20.8 MIN.