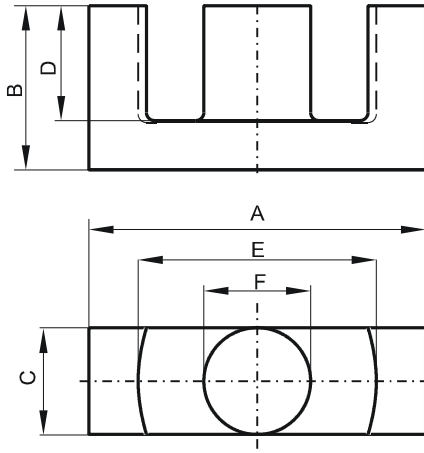


DIMENSIONS



(mm)	Nominal:	Tol. min.:	Tol. max.:
A	45.0	-2.0	0.0
B	22.3	-0.2	+ 0.2
C	15.2	-0.6	0.0
D	16.1	0.0	+ 0.8
E	32.5	0.0	+ 1.6
F	15.2	-0.6	0.0
Eff. Parameters			
Ae mm ²	Amin mm ²	le mm	Ve mm ³
173.0	172.0	103.0	17800

INDUCTANCE

AL value (nH)	Test conditions
4950 ± 25%	10 kHz, < 0.5 mT, 25 °C

MARKING

No marking

CORE LOSSES

P _i max	Test conditions
208 mW/cm ³ (3.7 W/set)	25 kHz, 200 mT, 100 °C

NOTE

Spec. modifications	Previous	Revised
2005-06-22	D=16.13 MIN. LOSSES:GENERAL F MATERIAL	D=16.1 MIN. LOSSES: DETAIL AS INDICATED