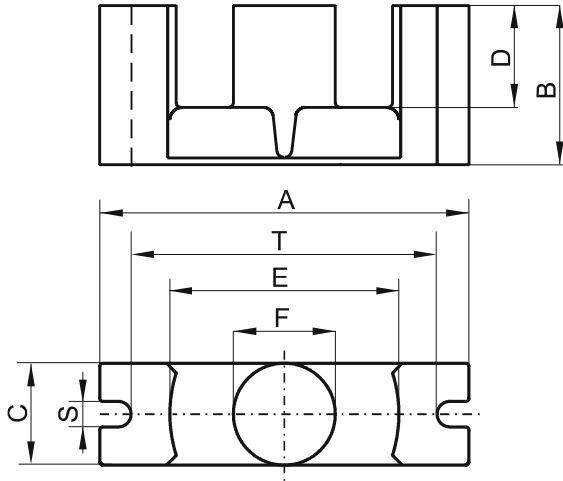


DIMENSIONS



(mm)	Nominal:	Tol. min.:	Tol. max.:
A	52.2	-1.3	+ 1.3
B	24.2	-0.15	+ 0.15
C	13.4	-0.35	+ 0.35
D	15.9	-0.4	+ 0.4
E	33.0	-0.9	+ 0.9
F	13.4	-0.35	+ 0.35
S	3.75	-0.25	+ 0.25
T	44.0	-1.3	+ 1.3
Eff. Parameters			
Ae mm²	Amin mm²	le mm	Ve mm³
180.0	141.0	105.0	18800

INDUCTANCE

AL value (nH/T ²)	Test conditions
5040 ± 25%	10 kHz, < 0.5 mT, 25 °C

MARKING

F EC

CORE LOSSES

P _i max	Test conditions
< 3.8 W/set (< 202 mW/cm ³)	25 kHz, 200 mT, 100 °C

NOTE

Spec. modifications	Previous	Revised
2005-06-22	A=53.47 Max. A=50.93 Min. C=13.73 Max. C=13.07 Min. E=32.13 Min. F=13.73 Max. F=13.07 Min. Losses: General F material S=3.75±0.23 T=44.0±1.27	A=53.5 Max. A=50.9 Min. C=13.75 Max. C=13.05 Min. E=32.1 Min. F=13.75 Max. F=13.05 Min. Losses: Detail as indicated S=3.75±0.25 T=44.0±1.3
2013-07-22	Marking: 0F45424EC PXXXXX	Marking: F EC