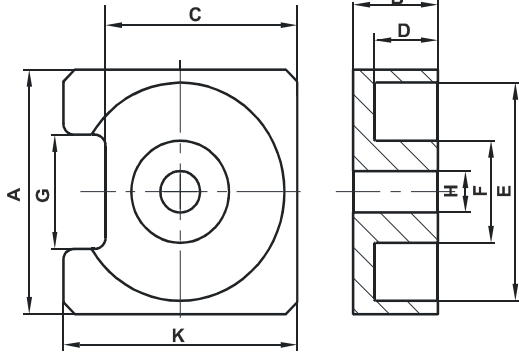


Specification for:

0J41410UG

110 Delta Drive
Pittsburgh, PA 15238
Phone: 412/696-1333
Fax: 412/696-0333
Email: magnetics@spang.com

DIMENSIONS



(mm)	Nominal:	Tol. min.:	Tol. max.:
A	14.35	-0.25	+ 0.25
B	5.0	-0.05	+ 0.05
C	11.76	-0.25	+ 0.25
D	3.76	-0.15	+ 0.15
E	12.8	-0.2	+ 0.2
F	6.0	-0.1	+ 0.1
G	6.7	-0.15	+ 0.15
H	2.44	-0.05	+ 0.05
K	14.35	-0.25	+ 0.25
Eff. Parameters			
Ae mm ²	Amin mm ²	le mm	Ve mm ³
42.2	23.5	30.8	1302

INDUCTANCE

AL value (nH)	Test conditions
Nom: 6867 Min.: 5150	10 kHz, < 0.5 mT, 25 °C

MARKING

No marking

LOSS FACTOR

$\tan \delta/\mu$ ($\times 10^{-6}$)	Test conditions
< 20	100 kHz, < 0.25 mT, 25 °C

NOTE

Spec. modifications	Previous	Revised
2005-12-13	Loss factor: General J material Marking	Loss factor: Detail as indicated No marking