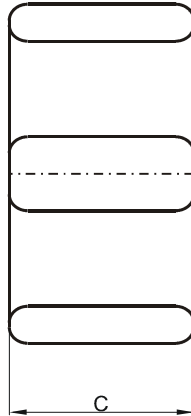
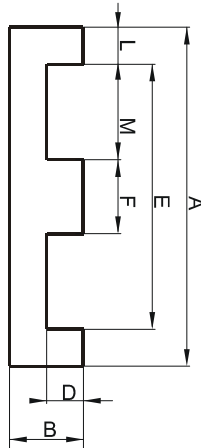


DIMENSIONS



(mm)	Nominal:	Tol. min.:	Tol. max.:
A	40.65	-0.5	+ 0.5
B	8.51	-0.25	+ 0.25
C	10.7	-0.25	+ 0.25
D	4.06	-0.25	+ 0.25
E	30.45	-0.3	+ 0.3
F	10.15	-0.15	+ 0.15
L	5.1 Ref.		
M	10.15 Ref.		
Eff. Parameters			
Ae mm ²	Amin mm ²	le mm	Ve mm ³
101	95.1	51.9	5220

INDUCTANCE

MARKING

AL value (nH/T ²)	Test conditions	No marking
Nom: 7130 Min.: 5348	10 kHz, < 0.5 mT, 25 °C	

LOSS FACTOR

$\tan \delta/\mu$	Test conditions
< 36 · 10 ⁻⁶	100 kHz, < 0.25 mT, 25 °C

NOTE

Spec. modifications	Previous	Revised
2005-06-22	Al=6860 Min. L=5.08±0.13 Loss factor: General J material	Al=5348 Min. L=5.1 Ref. Loss factor: Detail as indicated