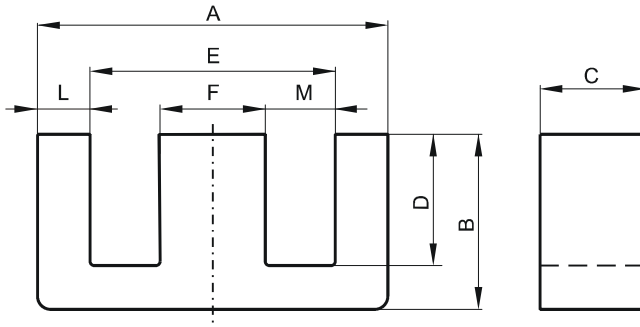


**DIMENSIONS**



(mm)	Nominal:	Tol. min.:	Tol. max.:
<b>A</b>	72.4	-0.76	+ 0.76
<b>B</b>	27.9	-0.33	+ 0.33
<b>C</b>	19.0	-0.33	+ 0.33
<b>D</b>	17.8 Min.		
<b>E</b>	52.6 Min.		
<b>F</b>	19.0	-0.38	+ 0.38
<b>L</b>	9.53	-0.38	+ 0.38
<b>M</b>	16.9 Min.		
Eff. Parameters			
<b>Ae mm<sup>2</sup></b>	<b>Amin mm<sup>2</sup></b>	<b>le mm</b>	<b>Ve mm<sup>3</sup></b>
368.0	363.0	137.0	50300

**INDUCTANCE**

<b>AL value (nH/T<sup>2</sup>)</b>	<b>Test conditions</b>
Nom: 11850 Min.: 8885	10 kHz, < 0.5 mT, 25 °C

**MARKING**

No marking
------------

**LOSS FACTOR**

<b><math>\tan \delta/\mu</math></b>	<b>Test conditions</b>
< 87 · 10 <sup>-6</sup>	100 kHz, < 0.25 mT, 25 °C

**NOTE**

<b>Spec. modifications</b>	<b>Previous</b>	<b>Revised</b>
2005-06-22	C=18.72 Min. E=52.63 Min. F=18.70 Min. Loss factor: General J material	C=18.67 Min. E=52.6 Min. F=18.62 Min. Loss factor: Detail as indicated