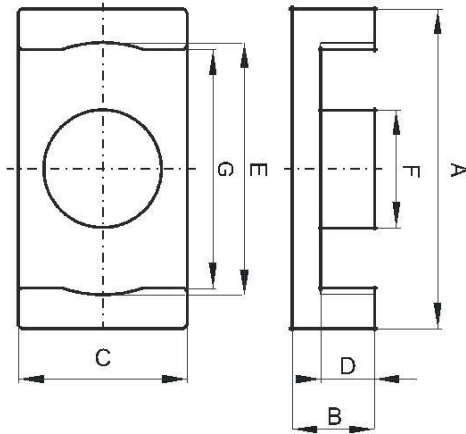


DIMENSIONS



(mm)	Nominal:Tol.	min.:Tol.	max.: Tol.
A	9.5	-0.3	0.0
B	2.45	-0.05	+ 0.05
C	5.0	-0.2	0.0
D	1.6	0.0	+ 0.15
E	7.5	0.0	+ 0.4
F	3.5	-0.2	0.0
G	7.1	0.0	+ 0.35
Eff. Parameters			
Ae mm²	Amin mm²	le mm	Ve mm³
8.47	7.6	14.2	120

INDUCTANCE

AL value (nH/T²)	Test conditions
440 _± 25%	10 kHz, < 0.5 mT, 25 °C

CORE LOSSES

P_L max	Test conditions
400 mW/cm ³ (0.048 W/set)	1000 kHz, 50 mT, 100 °C