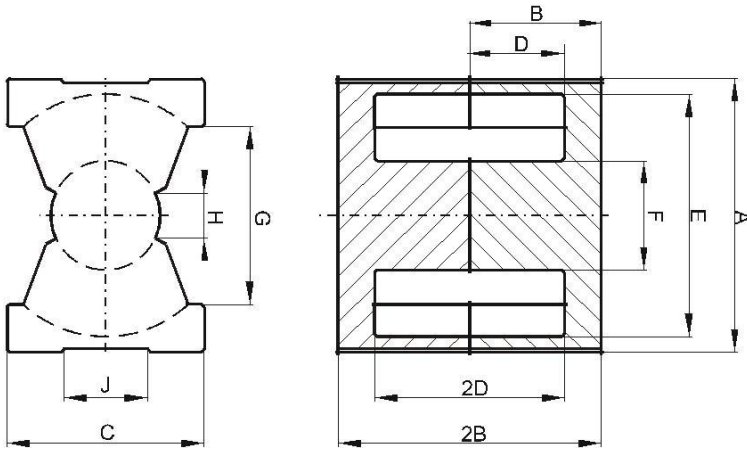


DIMENSIONS



(mm)	Nominal: Tol	min.:Tol.	max.: Tol
A	21.3	-0.4	+ 0.4
B	10.1	-0.1	+ 0.1
2B	20.2	-0.2	+ 0.2
C	14.0	-0.4	+ 0.4
D	7.15	-0.15	+ 0.15
2D	14.3	-0.3	+ 0.3
E	18.0	-0.4	+ 0.4
F	8.8	-0.2	+ 0.2
G	12.0 Min		
H	4.0 Min		
J	7.9 Min		
Eff. Parameters			
Ae mm²	Amin mm²	le mm	Ve mm³
62.6	59.1	45.7	2850

INDUCTANCE

AL value (nH/T²)	Test conditions
1170 ± 25%	10 kHz, < 0.5 mT, 25 °C

CORE LOSSES

P_L max	Test conditions
400 mW/cm ³ (1.14 W/set)	1000 kHz, 50 mT, 100 °C