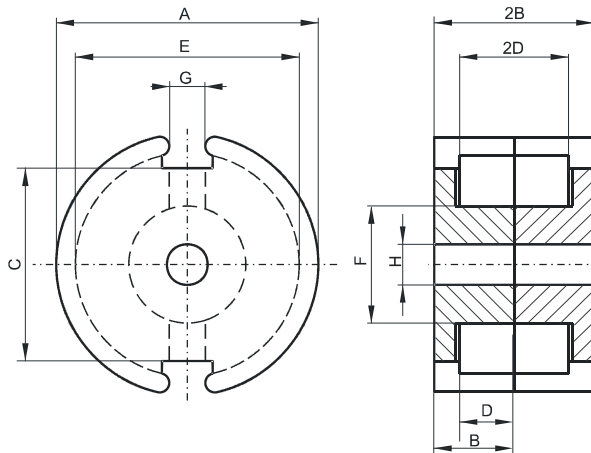


DIMENSIONS



(mm)	Nominal:	Tol. min.:	Tol. max.:
A	9.3	-0.3	0.0
B	2.7	-0.15	0.0
2B	5.4	-0.3	0.0
C	6.5	-0.25	+ 0.25
D	1.8	0.0	+ 0.15
2D	3.6	0.0	+ 0.3
E	7.5	0.0	+ 0.25
F	3.9	-0.2	0.0
G	2.0	-0.2	+ 0.2
H	2.1	-0.1	+ 0.1
Eff. Parameters			
Ae mm²	Amin mm²	le mm	Ve mm³
10.1	8.0	12.5	126

INDUCTANCE

AL value (nH/T²)	Test conditions
Nom: 1100 Min.: 825	10 kHz, < 0.5 mT, 25 °C

MARKING

No marking

CORE LOSSES

P_i max	Test conditions
119 mW/cm ³ (0.015 W/set)	100 kHz, 100 mT, 100 °C

NOTE

Spec. modifications	Previous	Revised
2005-06-22	B=2.57 Min. 2B=5.14 Min. C=5.14 Min. F=3.88 Max. G=1.93 Nom. G=1.78 Min. H=2.01±0.05	B=2.55 Min. 2B=5.1 Min. C=6.5 Nom. F=3.9 Max. G=2.0±0.2
2014-10-14	Losses: General P material Marking H=2.04 Min. H=2.1 Max.	Losses: Detail as indicated No marking H=2.1±0.1.