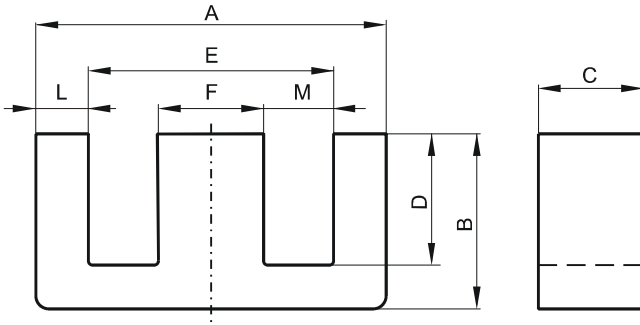


Specification for:

0P41808EC

110 Delta Drive
Pittsburgh, PA 15238
Phone: 412/696-1333
Fax: 412/696-0333
Email: magnetics@spang.com

DIMENSIONS



(mm)	Nominal:	Tol. min.:	Tol. max.:
A	19.1	-0.4	+ 0.4
B	8.1	-0.13	+ 0.13
C	4.75	-0.2	+ 0.2
D	5.7	-0.13	+ 0.13
E	14.33	-0.33	+ 0.33
F	4.75	-0.2	+ 0.2
L	2.38 Nom.		
M	4.79 Nom.		
Eff. Parameters			
Ae mm²	Amin mm²	le mm	Ve mm³
22.6	22.1	39.9	900

INDUCTANCE

AL value (nH)	Test conditions
Nom: 1253 Min.: 940	10 kHz, < 0.5 mT, 25 °C

MARKING

P EC

CORE LOSSES

P _i max	Test conditions
111 mW/cm ³ (0.1 W/set)	100 kHz, 100 mT, 100 °C

NOTE

Spec. modifications	Previous	Revised
2005-06-16	A=19.0 Min. C=4.62 Min. C=4.93 Max. F=4.65 Min. F=4.90 Max. M=4.65 Min. Losses: General P material	A=18.7 Min. C=4.55 Min. C=4.95 Max. F=4.55 Min. F=4.95 Max. M=4.79 Ref. Losses: Detail as indicated