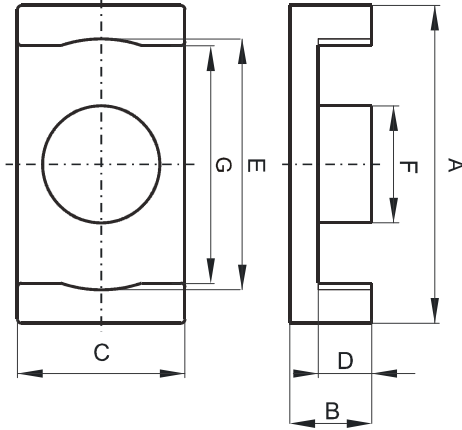


Specification for:

**0P42313EC**

110 Delta Drive  
Pittsburgh, PA 15238  
Phone: 412/696-1333  
Fax: 412/696-0333  
Email: magnetics@spang.com

**DIMENSIONS**



(mm)	Nominal:	Tol. min.:	Tol. max.:
<b>A</b>	23.2	-0.45	+ 0.45
<b>B</b>	3.6	-0.1	+ 0.1
<b>C</b>	12.5	-0.25	+ 0.25
<b>D</b>	1.6	-0.1	+ 0.1
<b>E</b>	20.2	-0.4	+ 0.4
<b>F</b>	8.0	-0.2	+ 0.2
<b>G</b>	17.5 Min.		
<b>Eff. Parameters</b>			
<b>Ae mm<sup>2</sup></b>	<b>Amin mm<sup>2</sup></b>	<b>le mm</b>	<b>Ve mm<sup>3</sup></b>
50.2	50.0	26.6	1340

**INDUCTANCE**

AL value (nH)	Test conditions
Nom: 4030 Min.: 3025	10 kHz, < 0.5 mT, 25 °C

**MARKING**

P EC
---------

**CORE LOSSES**

P <sub>i</sub> max	Test conditions
112 mW/cm <sup>3</sup> (0.15 W/set)	100 kHz, 100 mT, 100 °C