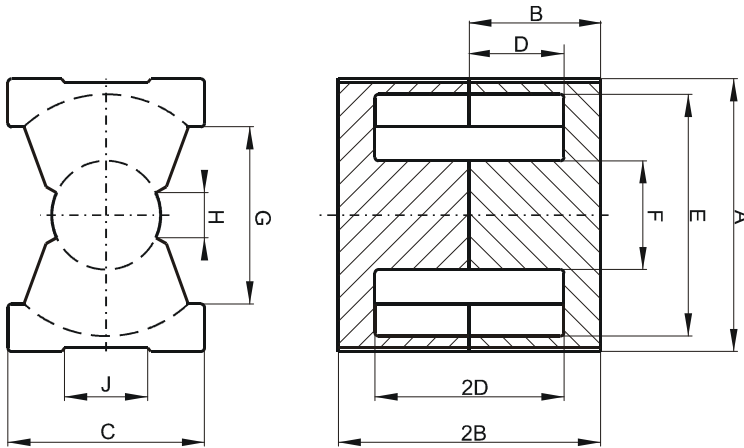


DIMENSIONS



(mm)	Nominal:	Tol. min.:	Tol. max.:
A	27.2	-0.45	+ 0.45
B	5.94	-0.1	+ 0.1
2B	11.9	-0.2	+ 0.2
C	19.0	-0.45	+ 0.45
D	3.4 Min.		
2D	6.7 Min.		
E	22.05 Min.		
F	12.2 Max.		
G	15.5 Min.		
H	5.5 Min.		
J	10.0 Min.		
Eff. Parameters			
Ae mm²	Amin mm²	le mm	Ve mm³
86.4	70.9	33.3	2880

INDUCTANCE

MARKING

AL value (nH/T ²)	Test conditions	
Nom: 6113 Min.: 4585	10 kHz, < 0.5 mT, 25 °C	0P42614UG PXXXXX

CORE LOSSES

P _i max	Test conditions
128 mW/cm ³ (0.37 W/set)	100 kHz, 100 mT, 100 °C

NOTE

Spec. modifications	Previous	Revised
2005-06-22	A=26.8 Min. Losses: General P material	A=26.75 Min. Losses: Detail as indicated