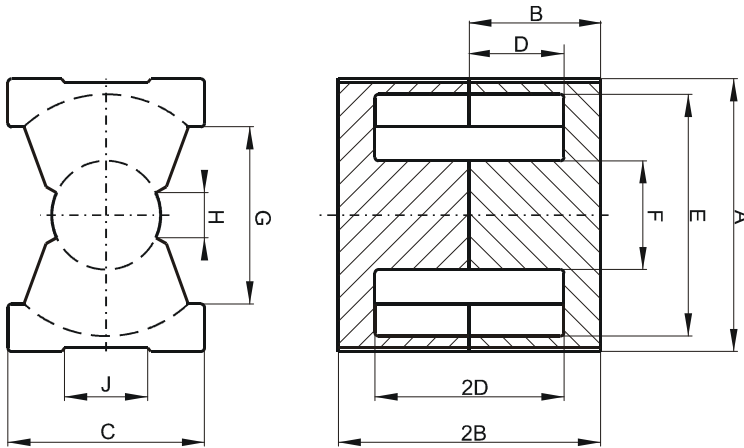


DIMENSIONS



(mm)	Nominal:	Tol. min.:	Tol. max.:
A	33.0	-0.5	+ 0.5
B	5.94	-0.1	+ 0.1
2B	11.9	-0.2	+ 0.2
C	22.0	-0.5	+ 0.5
D	3.4 Min.		
2D	6.7 Min.		
E	27.0 Min.		
F	13.75 Max.		
G	19.0 Min.		
Eff. Parameters			
Ae mm²	Amin mm²	le mm	Ve mm³
109.0	92.0	34.4	3750

INDUCTANCE

AL value (nH/T ²)	Test conditions
Nom: 7467 Min.: 5600	10 kHz, < 0.5 mT, 25 °C

MARKING

0P43214UG PXXXXX

CORE LOSSES

P _i max	Test conditions
128 mW/cm ³ (0.48 W/set)	100 kHz, 100 mT, 100 °C

NOTE

Spec. modifications	Previous	Revised
2005-06-22	F=13.72 Max. Losses: General P material	F=13.75 Max. Losses: Detail as indicated