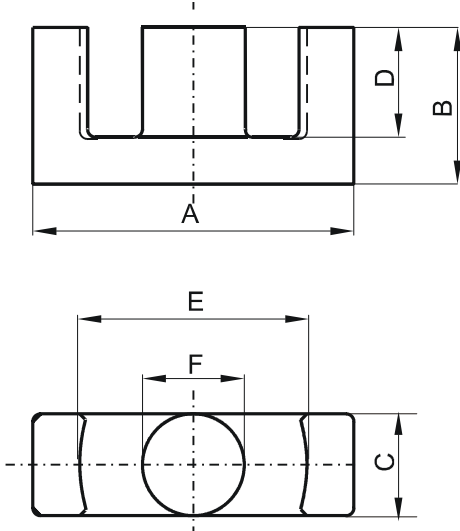


Specification for:

0P43521EC

110 Delta Drive
Pittsburgh, PA 15238
Phone: 412/696-1333
Fax: 412/696-0333
Email:magnetics@spang.com

DIMENSIONS



(mm)	Nominal:	Tol. min.:	Tol. max.:
A	35.0	-0.65	+ 0.65
B	20.7	-0.2	+ 0.2
C	11.4	-0.35	+ 0.35
D	14.75	-0.35	+ 0.35
E	16.15	-0.55	+ 0.55
F	11.3	-0.25	+ 0.25
Eff. Parameters			
Ae mm²	Amin mm²	le mm	Ve mm³
107.0	100.0	90.8	9710

INDUCTANCE

AL value (nH)	Test conditions
Nom: 2960 Min.: 2220	10 kHz, < 0.5 mT, 25 °C

MARKING

P EC

CORE LOSSES

P _i max	Test conditions
100 mW/cm ³ (0.971 W/set)	100 kHz, 100 mT, 100 °C

NOTE

Spec. modifications	Previous	Revised
2005-06-16	A=35.5 MAX. A=34.5 MIN. C=11.56 MAX. E=26.62 MAX. LOSSES: GENERAL P MATERIAL	A=35.65 MAX. A=34.35 MIN. C=11.76 MAX. E=26.7 MAX. LOSSES: DETAIL AS INDICATE