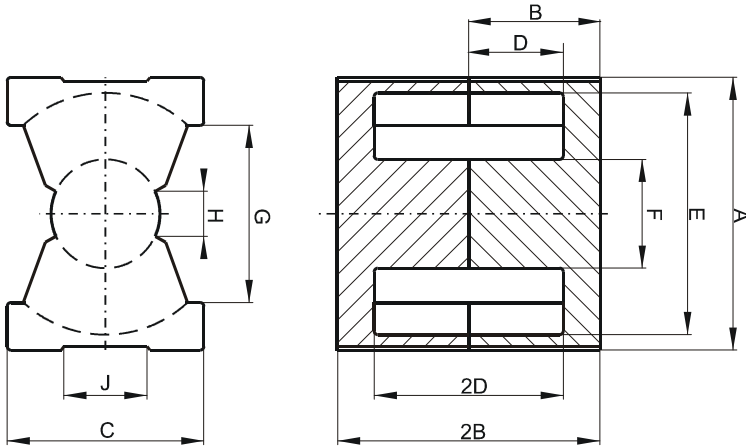


Specification for:

0P45050UG

1F60\caDrive
Pittsburgh, PA 15238
Phone: 412/696-1333
Fax: 412/696-0333
Email: magnetics@spang.com

DIMENSIONS



(mm)	Nominal:	Tol. min.:	Tol. max.:
A	51.0	-0.7	+ 0.7
B	25.0	-0.25	+ 0.25
2B	50.0	-0.5	+ 0.5
C	32.0	-0.6	+ 0.6
D	18.05	-0.3	+ 0.3
2D	36.1	-0.6	+ 0.6
E	44.0	-0.7	+ 0.7
F	20.0	-0.35	+ 0.35
G	32.0 MIN		
Eff. Parameters			
Ae mm²	Amin mm²	le mm	Ve mm³
328.0	314.0	113.0	37100

INDUCTANCE

AL value (nH)	Test conditions
Nom: 8195 Min.: 6146	10 kHz, < 0.5 mT, 25 °C

MARKING

0P45050UG PXXXXX

CORE LOSSES

P _i max	Test conditions
100 mW/cm ³ (3.71 W/set)	100 kHz, 100 mT, 100 °C