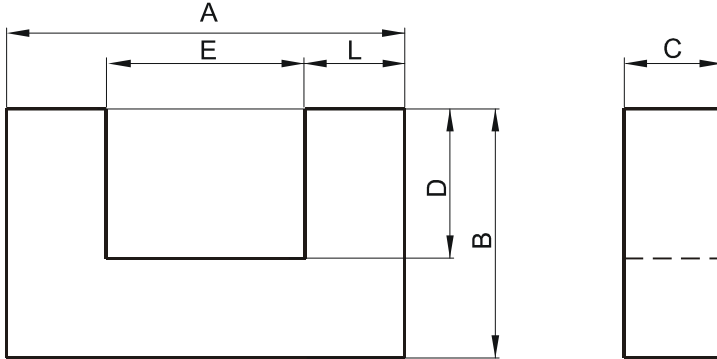


DIMENSIONS



(mm)	Nominal:	Tol. min.:	Tol. max.:
A	93.0	-1.8	+ 1.8
B	76.0	-0.5	+ 0.5
C	30.0	-0.6	+ 0.6
D	48.0	-0.9	+ 0.9
E	36.2	-1.2	+ 1.2
L	28.4 Ref.		
Eff. Parameters			
Ae mm²	Amin mm²	le mm	Ve mm³
840	840	354	297000

INDUCTANCE

AL value (nH/T ²)	Test conditions
Nom: 7219 Min.: 5414	10 kHz, < 0.5 mT, 25 °C

MARKING

OP49330UC

REMARKS

PI value measured on T25/15/10-P sintered together with OP-49330-UC

CORE LOSSES

P _i max	Test conditions
< 0.36 W (< 123 mW/cm ³)	100 kHz, 100 mT, 100 °C

NOTE

Spec. modifications	Previous	Revised
2010-07-20		Issued