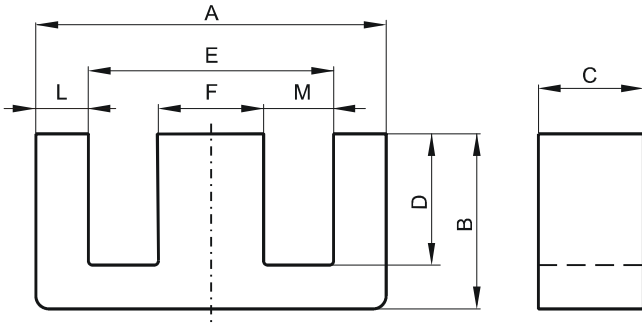


Specification for:

**0R41808EC**

110 Delta Drive  
Pittsburgh, PA 15238  
Phone: 412/696-1333  
Fax: 412/696-0333  
Email:magnetics@spang.com

**DIMENSIONS**



(mm)	Nominal:	Tol. min.:	Tol. max.:
<b>A</b>	19.1	-0.4	+ 0.4
<b>B</b>	8.1	-0.13	+ 0.13
<b>C</b>	4.75	-0.2	+ 0.2
<b>D</b>	5.7	-0.13	+ 0.13
<b>E</b>	14.33	-0.33	+ 0.33
<b>F</b>	4.75	-0.2	+ 0.2
<b>L</b>	2.38 Nom.		
<b>M</b>	4.79 Nom.		
Eff. Parameters			
Ae mm <sup>2</sup>	Amin mm <sup>2</sup>	le mm	Ve mm <sup>3</sup>
22.6	22.1	39.9	900

**INDUCTANCE**

AL value (nH)	Test conditions
Nom: 1153 Min.: 865	10 kHz, < 0.5 mT, 25 °C

**MARKING**

R EC
---------

**CORE LOSSES**

P <sub>i</sub> max	Test conditions
89 mW/cm <sup>3</sup> ( 0.08 W/set)	100 kHz, 100 mT, 100 °C
500 mW/cm <sup>3</sup> (0.45 W/set)	100 kHz, 200 mT, 100 °C

**NOTE**

Spec. modifications	Previous	Revised
2005-06-16	A=19.0 Min. C=4.62 Min. C=4.93 Max. F=4.65 Min. F=4.90 Max. M=4.65 Min. Losses: General R material	A=18.7 Min. C=4.55 Min. C=4.95 Max. F=4.55 Min. F=4.95 Max. M=4.79 Ref. Losses: Detail as indicated