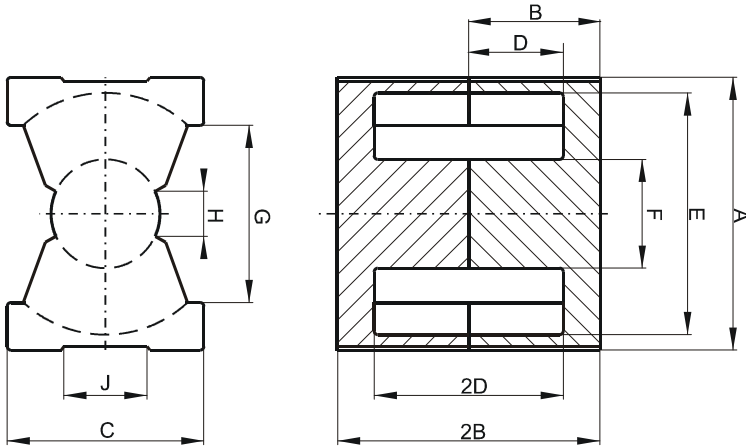


Specification for:

0R42020UG

110 Delta Drive
Pittsburgh, PA 15238
Phone: 412/696-1333
Fax: 412/696-0333
Email: magnetics@spang.com

DIMENSIONS



(mm)	Nominal:	Tol. min.:	Tol. max.:
A	21.3	-0.4	+ 0.4
B	10.1	-0.1	+ 0.1
2B	20.2	-0.2	+ 0.2
C	14.0	-0.4	+ 0.4
D	7.15	-0.15	+ 0.15
2D	14.3	-0.3	+ 0.3
E	18.0	-0.4	+ 0.4
F	8.8	-0.2	+ 0.2
G	12.0 Min.		
H	4.0 Min.		
J	7.9 Min.		
Eff. Parameters			
Ae mm ²	Amin mm ²	le mm	Ve mm ³
62.6	59.1	45.7	2850

INDUCTANCE

AL value (nH)	Test conditions
Nom: 2947 Min.: 2210	10 kHz, < 0.5 mT, 25 °C

MARKING

0R42020UG PXXXXX

CORE LOSSES

P _i max	Test conditions
95 mW/cm ³ (0.27 W/set)	100 kHz, 100 mT, 100 °C
596 mW/cm ³ (1.7 W/set)	100 kHz, 200 mT, 100 °C

NOTE

Spec. modifications	Previous	Revised
2005-06-22	A=20.85 Min. A=21.67 Max. D=7.01 Min. 2D=14.02 Min. Losses: General R material	A=20.9 Min. A=21.7 Max. D=7.00 Min. 2D=14.00 Min. Losses: Detail as indicated