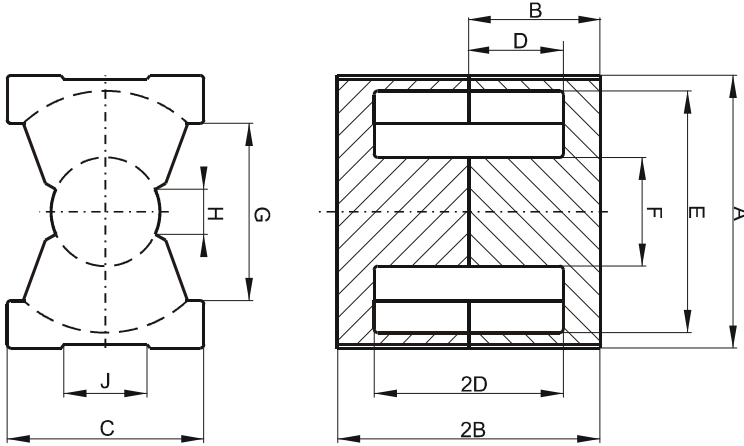


Specification for:

0R42610UG

110 Delta Drive
Pittsburgh, PA 15238
Phone: 412/696-1333
Fax: 412/696-0333
Email:magnetics@spang.com

DIMENSIONS



(mm)	Nominal:	Tol. min.:	Tol. max.:
A	27.2	-0.45	+ 0.45
B	5.1	-0.1	+ 0.1
2B	10.2	-0.2	+ 0.2
C	19.0	-0.45	+ 0.45
D	1.2 Min.		
2D	2.39 Min.		
E	22.05 Min.		
F	12.2 Max.		
G	15.5 Min.		
H	5.5 Min.	0.0	0.0
J	10.0 Min.	0.0	0.0
Eff. Parameters			
Ae mm²	Amin mm²	le mm	Ve mm³
105.0	93.8	29.4	3090

INDUCTANCE

AL value (nH)	Test conditions
Nom: 7733 Min.: 5800	10 kHz, < 0.5 mT, 25 °C

MARKING

0R42610UG PXXXXX

CORE LOSSES

P _i max	Test conditions
94 mW/cm ³ (0.29 W/set)	100 kHz, 100 mT, 100 °C
550 mW/cm ³ (1.7 W/set)	100 kHz, 200 mT, 100 °C

NOTE

Spec. modifications	Previous	Revised
2005-06-22	A=26.90 Min. B=5.18 Max. 2B=10.36 Max. Losses: General R material	A=26.75 Min. B=5.2 Max. 2B=10.40 Max. Losses: Detail as indicated