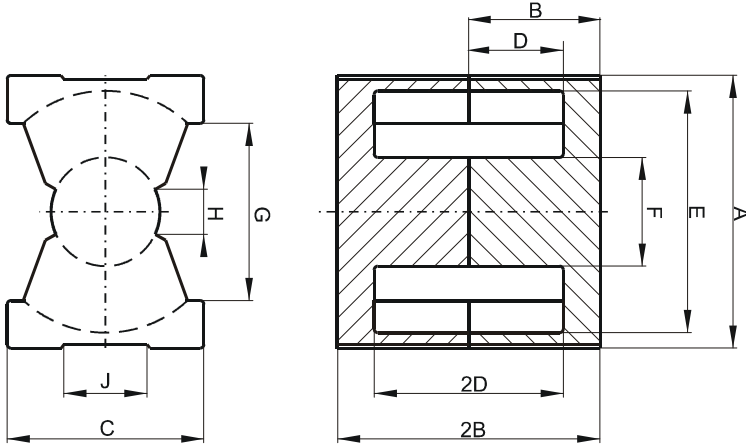


Specification for:

0R43220UG

110 Delta Drive
Pittsburgh, PA 15238
Phone: 412/696-1333
Fax: 412/696-0333
Email: magnetics@spang.com

DIMENSIONS



(mm)	Nominal:	Tol. min.:	Tol. max.:
A	33.0	-0.5	+ 0.5
B	10.3	-0.13	+ 0.13
2B	20.6	-0.25	+ 0.25
C	22.0	-0.5	+ 0.5
D	5.75	-0.15	+ 0.15
2D	11.5	-0.3	+ 0.3
E	27.5	-0.5	+ 0.5
F	13.5	-0.25	+ 0.25
G	19.0 Min.		
H	5.5 Min.		
J	11.6 Min.		
Eff. Parameters			
Ae mm²	Amin mm²	le mm	Ve mm³
169.0	142.0	55.9	9440

INDUCTANCE

AL value (nH)	Test conditions
Nom: 6640 Min.: 4980	10 kHz, < 0.5 mT, 25 °C

MARKING

0R43220UG PXXXXX

CORE LOSSES

P _i max	Test conditions
95 mW/cm ³ (0.9 W/set)	100 kHz, 100 mT, 100 °C
583 mW/cm ³ (5.5 W/set)	100 kHz, 200 mT, 100 °C

NOTE

Spec. modifications	Previous	Revised
2005-06-22	2B=20.83 Max. F=13.72 Max. Losses: General R material	2B=20.85 Max. F=13.75 Max. Losses: Detail as indicated