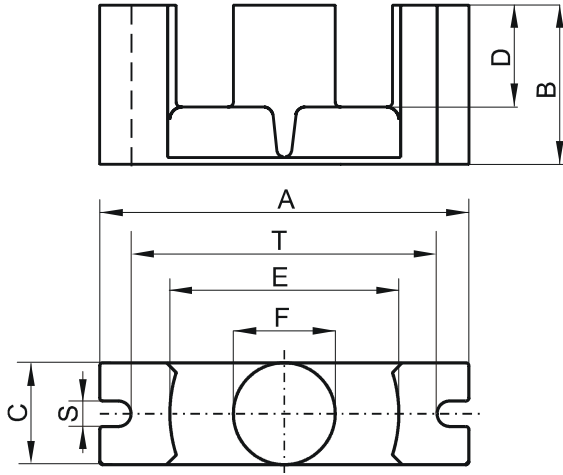


Specification for:

0R43517EC

110 Delta Drive
Pittsburgh, PA 15238
Phone: 412/696-1333
Fax: 412/696-0333
Email: magnetics@spang.com

DIMENSIONS



(mm)	Nominal:	Tol. min.:	Tol. max.:
A	34.5	-0.8	+ 0.8
B	17.3	-0.15	+ 0.15
C	9.5	-0.3	+ 0.3
D	12.3	-0.4	+ 0.4
E	22.75	-0.55	+ 0.55
F	9.5	-0.3	+ 0.3
S	2.75	-0.25	+ 0.25
T	28.5	-0.8	+ 0.8
Eff. Parameters			
Ae mm ²	Amin mm ²	le mm	Ve mm ³
84.3	71.0	77.4	6530

INDUCTANCE

AL value (nH)	Test conditions
Nom: 2213 Min.: 1660	10 kHz, < 0.5 mT, 25 °C

MARKING

R EC

CORE LOSSES

P _i max	Test conditions
96 mW/cm ³ (0.63 W/set)	100 kHz, 100 mT, 100 °C
643 mW/cm ³ (4.2 W/set)	100 kHz, 200 mT, 100 °C

NOTE

Spec. modifications	Previous	Revised
2005-06-22	A=35.26 Max. A=33.73 Min. E=23.25 Max. E=22.24 Min. S=2.74±0.25 T=28.5±0.76 Losses: General R material	A=35.3 Max. A=33.7 Min. E=23.3 Max. E=22.2 Min. S=2.75±0.25 T=28.5±0.8 Losses: Detail as indicated