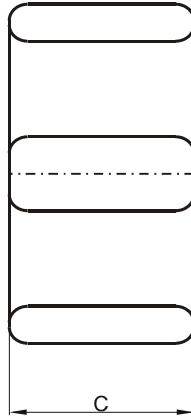
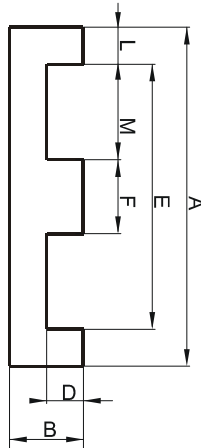


**DIMENSIONS**



(mm)	Nominal:	Tol. min.:	Tol. max.:
<b>A</b>	35.56	-0.5	+ 0.5
<b>B</b>	6.35	-0.13	+ 0.13
<b>C</b>	17.8	-0.4	+ 0.4
<b>D</b>	2.41 Min.		
<b>E</b>	27.2 Min.		
<b>F</b>	7.62	-0.18	+ 0.18
<b>L</b>	3.81	-0.13	+ 0.13
<b>M</b>	10.16	-0.25	+ 0.25
Eff. Parameters			
Ae mm <sup>2</sup>	Amin mm <sup>2</sup>	le mm	Ve mm <sup>3</sup>
135	135	42.4	5750

**INDUCTANCE**

**MARKING**

AL value (nH/T <sup>2</sup> )	Test conditions	0R43618EC PXXXXX
Nom: 6678 Min.: 5009	10 kHz, < 0.5 mT, 25 °C	

**CORE LOSSES**

P <sub>i</sub> max	Test conditions
95 mW/cm <sup>3</sup> (0.55 W/set)	100 kHz, 100 mT, 100 °C
580 mW/cm <sup>3</sup> (3.34 W/set)	100 kHz, 200 mT, 100 °C

**NOTE**

Spec. modifications	Previous	Revised
2005-06-22	AL=5435 Min. C=18.16 Max. Losses: General R material	AL=5009 Min. C=18.2 Max. Losses: Detail as indicated