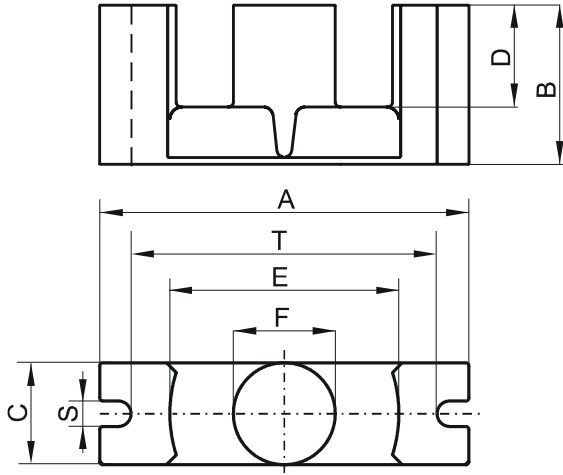


Specification for:

**0R44119EC**

110 Delta Drive  
Pittsburgh, PA 15238  
Phone: 412/696-1333  
Fax: 412/696-0333  
Email: magnetics@spang.com

**DIMENSIONS**



(mm)	Nominal:	Tol. min.:	Tol. max.:
<b>A</b>	40.6	-1.0	+ 1.0
<b>B</b>	19.5	-0.15	+ 0.15
<b>C</b>	11.6	-0.3	+ 0.3
<b>D</b>	13.9	-0.4	+ 0.4
<b>E</b>	27.0	-0.7	+ 0.7
<b>F</b>	11.6	-0.3	+ 0.3
<b>S</b>	3.25	-0.25	+ 0.25
<b>T</b>	33.6	-1.0	+ 1.0
Eff. Parameters			
Ae mm <sup>2</sup>	Amin mm <sup>2</sup>	le mm	Ve mm <sup>3</sup>
121.0	106.0	89.3	10800

**INDUCTANCE**

AL value (nH)	Test conditions
Nom: 3473 Min.: 2605	10 kHz, < 0.5 mT, 25 °C

**MARKING**

R EC
---------

**CORE LOSSES**

P <sub>i</sub> max	Test conditions
93 mW/cm <sup>3</sup> (1.0 W/set)	100 kHz, 100 mT, 100 °C
546 mW/cm <sup>3</sup> (5.9 W/set)	100 kHz, 200 mT, 100 °C

**NOTE**

Spec. modifications	Previous	Revised
2005-06-16	A=41.5 Max. A=39.8 Min. T=33.58±0.89 Losses: General R material	A=41.6 Max. A=39.6 Min. T=33.6±1.0 Losses: Detail as indicated