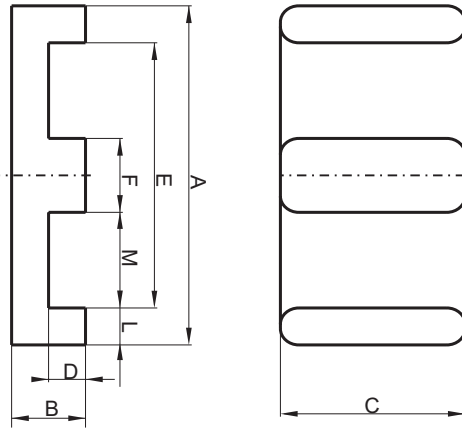


DIMENSIONS



(mm)	Nominal:	Tol.min.:	Tol.max.:
(A)	43.2	-0.9	+0.9
(B)	8.51	-0.25	+0.25
(C)	27.9	-0.6	+0.6
(D)	4.44	-0.25	+0.25
(E)	34.7 MIN.	---	---
(F)	8.1	-0.2	+0.2
(L)	4.7 MAX.		
(M)	13.2 MIN.		
Eff. Parameters			
A_e mm²	A_{min} mm²	l_e mm	V_e mm³
227.0	227.0	57.5	13100

INDUCTANCE

AI value (nH)	Test conditions
Nominal: 8560 Minimum: 6420	10 kHz, 0.5 mT, 25°C

CORE LOSSES

P_i max	Test conditions
101 mW/cm ³ (1.32 W/set) 580 mW/cm ³ (7.6 W/set)	100 kHz, 100 mT, 100°C 100 kHz, 200 mT, 100°C

MARKING

Marking: 0R44308EC PXXXXX

NOTE

Spec. modification	Previous	Revised
2005.06.16	<p>FLAT TOOLING RESULTING IN SHARP CORNERS A=43.7 MAX. A=42.7 MIN. C=28.3 MAX. C=27.6 MIN. F=8.26 MAX F=8.0 MIN. L=4.06±0.13</p> <p>LOSSES: GENERAL R MATERIAL</p>	<p>MULTILEVEL TOOLING RESULTING IN RADIUS CORNERS A=44.1 MAX. A=42.3 MIN. C=28.5 MAX. C=27.3 MIN. F=8.3 MAX F=7.9 MIN. L=4.7 MAX.</p> <p>LOSSES: DETAIL AS INDICATED</p>