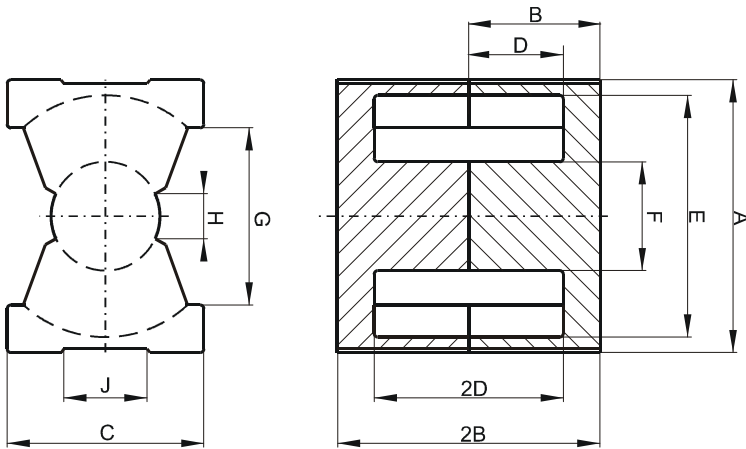


**DIMENSIONS**



(mm)	Nominal:	Tol. min.:	Tol. max.:
<b>A</b>	51.0	-0.7	+ 0.7
<b>B</b>	25.0	-0.25	+ 0.25
<b>2B</b>	50.0	-0.5	+ 0.5
<b>C</b>	32.0	-0.6	+ 0.6
<b>D</b>	18.05	-0.3	+ 0.3
<b>2D</b>	36.1	-0.6	+ 0.6
<b>E</b>	44.0	-0.7	+ 0.7
<b>F</b>	20.0	-0.35	+ 0.35
<b>G</b>	32.0 Min.		
<b>H</b>	8.15 Min.		
<b>J</b>	18.0 Min.		
Eff. Parameters			
<b>Ae mm<sup>2</sup></b>	<b>Amin mm<sup>2</sup></b>	<b>le mm</b>	<b>Ve mm<sup>3</sup></b>
328.0	314.0	113.0	37100

**INDUCTANCE**

AL value (nH/T <sup>2</sup> )	Test conditions
Nom: 7400 Min.: 5550	10 kHz, < 0.5 mT, 25 °C

**MARKING**

0R45050UG PXXXXXXXXX
-------------------------

**CORE LOSSES**

P <sub>i</sub> max	Test conditions
< 3.8 W/set (< 102 mW/cm <sup>3</sup> )	100 kHz, 100 mT, 100 °C
< 23 W/set (< 620 mW/cm <sup>3</sup> )	100 kHz, 200 mT, 100 °C

**NOTE**

Spec. modifications	Previous	Revised
2013-07-22	Marking: 0R45050UG PXXXXX	Marking: 0R45050UG PXXXXXXXXX