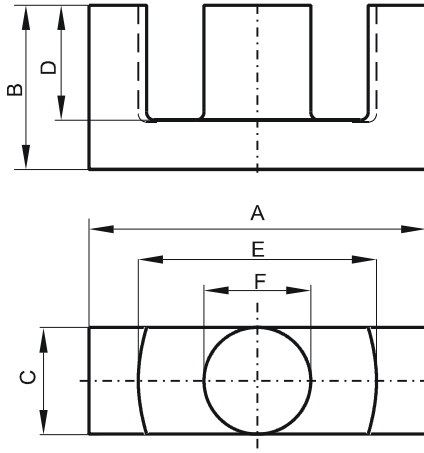


Specification for:

**0T43939EC**

110 Delta Drive  
Pittsburgh, PA 15238  
Phone: 412/696-1333  
Fax: 412/696-0333  
Email: magnetics@spang.com

**DIMENSIONS**



(mm)	Nominal:	Tol. min.:	Tol. max.:
<b>A</b>	40.0	-1.8	0.0
<b>B</b>	19.8	-0.2	+ 0.2
<b>C</b>	12.8	-0.6	0.0
<b>D</b>	14.2	0.0	+ 0.8
<b>E</b>	29.3	0.0	+ 1.6
<b>F</b>	12.8	-0.6	0.0
Eff. Parameters			
Ae mm <sup>2</sup>	Amin mm <sup>2</sup>	le mm	Ve mm <sup>3</sup>
125.0	123.0	92.2	11500

**INDUCTANCE**

AL value (nH)	Test conditions
Nom: 3650 Min.: 2737.5	10 kHz, < 0.5 mT, 25 °C

**MARKING**

T EC
---------

**CORE LOSSES**

P <sub>i</sub> max	Test conditions
500 mW/cm <sup>3</sup> (5.75 Wset)	100 kHz, 200 mT, 25 °C
480 mW/cm <sup>3</sup> (5.52 Wset)	100 kHz, 200 mT, 100 °C

**NOTE**

Spec. modifications	Previous	Revised