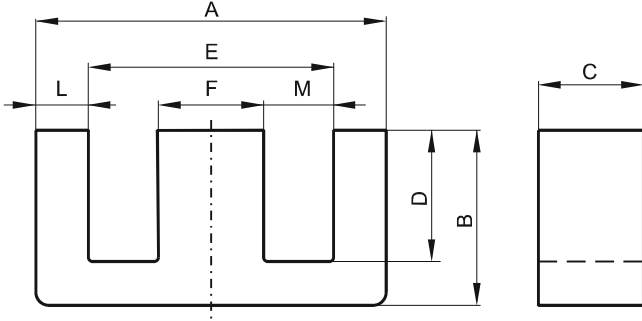


DIMENSIONS



(mm)	Nominal:	Tol. min.:	Tol. max.:
A	43.0	-1.7	0.0
B	21.0	-0.2	+ 0.2
C	20.0	-0.8	0.0
D	14.8	0.0	+ 0.6
E	29.5	0.0	+ 1.4
F	12.2	-0.5	0.0
L	6.75 Nom.		
M	8.65 Nom.		
Eff. Parameters			
Ae mm²	Amin mm²	le mm	Ve mm³
233.0	233.0	97.0	22700

INDUCTANCE

AL value (nH/T ²)	Test conditions
Nom: 6950 Min.: 5213	10 kHz, < 0.5 mT, 25 °C

MARKING

OT44022EC
PXXXXXXXXX

CORE LOSSES

P _i max	Test conditions
< 14.3 W/set (< 630 mW/cm ³)	100 kHz, 200 mT, 25 °C
< 13.6 W/set (< 600 mW/cm ³)	100 kHz, 200 mT, 100 °C

NOTE

Spec. modifications	Previous	Revised
2009-08-20		Issued
2014-01-21	Marking: OT44022EC PXXXXX	Marking: OT44022EC PXXXXXXXXX