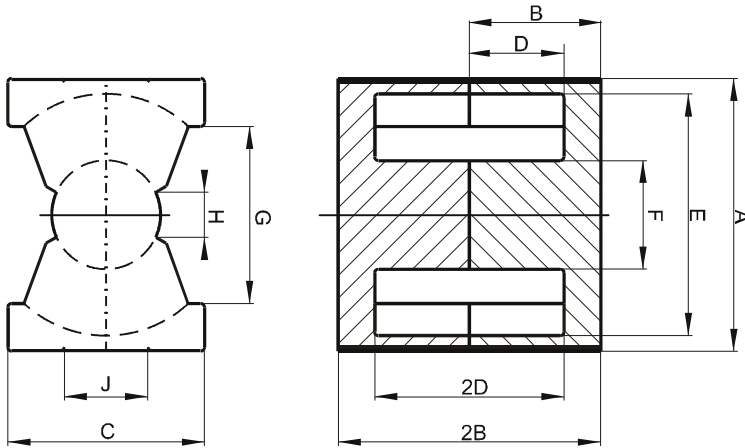


DIMENSIONS



(mm)	Nominal:	Tol. min.:	Tol. max.:
A	41.5	-0.9	+ 0.9
B	19.9	-0.15	+ 0.15
2B	39.8	-0.30	+ 0.30
C	28.0	-0.6	+ 0.6
D	14.75	-0.20	+ 0.20
2D	29.5	-0.4	+ 0.4
E	37.0	-0.6	+ 0.6
F	14.9	-0.30	+ 0.30
G	28.0 Min.		
H	6.05 Min.		
J	15.0 Min.		
Eff. Parameters			
Ae mm ²	Amin mm ²	le mm	Ve mm ³
201	175	102	20500

INDUCTANCE

MARKING

AL value (nH/T ²)	Test conditions	
Nom: 6100 Min.: 4575	10 kHz, < 0.5 mT, 25 °C	0T44040UG CXXXXX

CORE LOSSES

P _i max	Test conditions
< 12.9 W/set < 12.3 W/set	100 kHz, 200 mT, 25 °C 100 kHz, 200 mT, 100 °C

NOTE

Spec. modifications	Previous	Revised
2011/01/06th		Issued