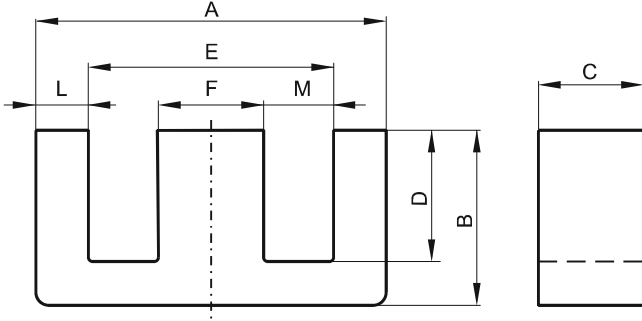


DIMENSIONS



(mm)	Nominal:	Tol. min.:	Tol. max.:
A	56.2	-2.1	0.0
B	27.6	-0.38	+ 0.38
C	24.61	-0.38	+ 0.38
D	18.5 Min.		
E	37.5 Min.		
F	17.2	-0.5	0.0
L	9.35 Ref.		
M	10.15 Ref.		
Eff. Parameters			
Ae mm²	Amin mm²	le mm	Ve mm³
420.0	411.0	123.0	52000

INDUCTANCE

AL value (nH/T ²)	Test conditions
9860 ± 25%	10 kHz, < 0.5 mT, 25 °C

MARKING

OT45530EC
PXXXXXXXXX

CORE LOSSES

P _i max	Test conditions
< 32.8 W/set (< 630 mW/cm ³)	100 kHz, 200 mT, 25 °C
< 31.2 W/set (< 600 mW/cm ³)	100 kHz, 200 mT, 100 °C

NOTE

Spec. modifications	Previous	Revised
2010-08-11		Issued
2013-07-22	Marking: OT45530EC PXXXXX	Marking: OT45530EC PXXXXXXXXX