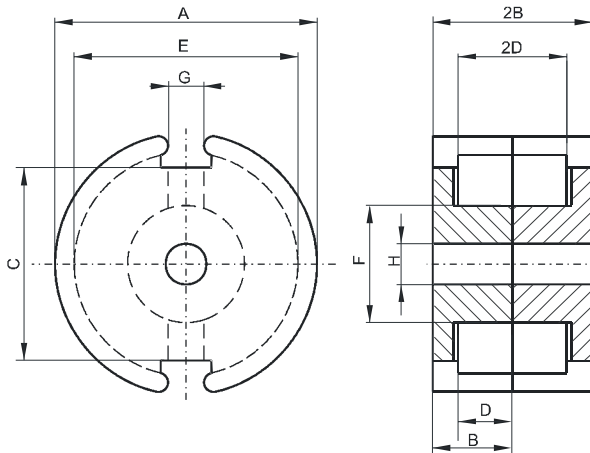


**DIMENSIONS**



(mm)	Nominal:	Tol. min.:	Tol. max.:
<b>A</b>	35.6	-0.6	+ 0.6
<b>B</b>	10.95	-0.05	+ 0.05
<b>2B</b>	21.9	-0.1	+ 0.1
<b>C</b>	26.2	-0.6	+ 0.6
<b>D</b>	7.3 Min.		
<b>2D</b>	14.6 Min.		
<b>E</b>	30.4	-0.5	+ 0.5
<b>F</b>	15.9	-0.3	+ 0.3
<b>G</b>	4.9	-0.6	+ 0.6
<b>H</b>	5.55	-0.15	+ 0.15
<b>Eff. Parameters</b>			
<b>Ae mm<sup>2</sup></b>	<b>Amin mm<sup>2</sup></b>	<b>le mm</b>	<b>Ve mm<sup>3</sup></b>
202.0	172.0	53.2	10700

**INDUCTANCE**

AL value (nH/T <sup>2</sup> )	Test conditions
9000 ± 25%	10 kHz, < 0.5 mT, 25 °C

**MARKING**

No marking

**LOSS FACTOR**

$\tan \delta/\mu$ ( $\times 10^{-6}$ )	Test conditions
< 6	100 kHz, < 0.25 mT, 25 °C
$\alpha_F$ ( $\times 10^{-6}$ )	Test conditions
-0.7 to 0.7	20 °C to 40 °C
-0.7 to 0.7	40 °C to 70 °C