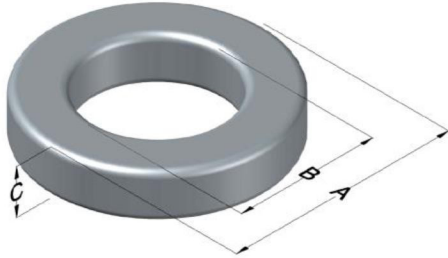




C055024A2

110 Delta Drive
 Pittsburgh, PA 15238
 NAFTA Sales: (1)800-245-3984
 HK Sales : (852)3102-9337
 magnetics@spang.com
 www.mag-inc.com



MPP Permeability (μ)	A_L (nH/T ²)	Core Marking			Coating Color
		Lot Number	Part Number	Inductance Grade	
173	73 \pm 8%	XXXXXX	024A2	X	Gray

Dimensions	Uncoated		Coated Limits			Packaging
	(mm)	(in)	(mm)	(in)		
OD (A)	7.87	0.310	8.51	0.335	max	Bulk Pack 4 bags/box Box Qty= 10,000 pcs
ID (B)	3.96	0.156	3.45	0.136	min	
HT (C)	3.18	0.125	3.81	0.150	max	

Electrical Characteristics			Physical Characteristics						
Watt Loss @ 100 kHz, 100mT max(mW/cm ³)	DC Bias min (oersteds)		Voltage Breakdown wire to wire min (V _{AC})	Break Strength min (kg)	Window Area W _A (mm ²)	Cross Section A _e (mm ²)	Path Length L _e (mm)	Volume V _e (mm ³)	Weight (g)
	80%	50%							
900	20.0	36.5	1250	10.0	9.35	5.99	17.9	107	0.9400

Winding Information					Temperature Rating	
Winding Length Per Turn				Wound Coil Dimensions (mm)		Curie Temp: 460°C
Winding Factor	(mm)	Winding Factor	(mm)	40% Winding Factor		Coating Temp (Continuous up to): 200°C
				OD	9.07	Notes:
				HT	4.93	
				Completely Full Window		
				Max OD	11.0	
				Max HT	6.73	
				Surface Area (mm ²)		
				Unwound Core		240
				40% Winding Factor		310

