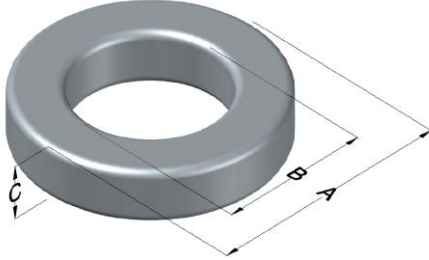




# C055076A2

110 Delta Drive  
 Pittsburgh, PA 15238  
 NAFTA Sales: (1)800-245-3984  
 HK Sales : (852)3102-9337  
 magnetics@spang.com



MPP Permeability ( $\mu$ )	$A_L$ (nH/T <sup>2</sup> )	Core Marking			Coating Color
		Lot Number	Part Number	Inductance Grade	
60	57 $\pm$ 8%	XXXXXX	55076A2	X	Grey

Dimensions	Uncoated		Coated Limits			Packaging
	(mm)	(in)	(mm)	(in)		
OD (A)	35.81	1.410	36.70	1.445	max	Cardboard cut-outs Box Qty= 220 pcs
ID (B)	22.35	0.880	21.54	0.848	min	
HT (C)	10.46	0.412	11.35	0.447	max	

Electrical Characteristics			Physical Characteristics						
Watt Loss @ 100 kHz, 100 mT max (mW/cm <sup>3</sup> )	DC Bias min (oersteds)		Voltage Breakdown wire to wire min (V <sub>AC</sub> )	Break Strength min (kg)	Window Area W <sub>a</sub> (mm <sup>2</sup> )	Cross Section A <sub>e</sub> (mm <sup>2</sup> )	Path Length L <sub>e</sub> (mm)	Volume V <sub>e</sub> (mm <sup>3</sup> )	Est. Weight (g)
	80%	50%							
700	50	94	3000	80.0	364	67.8	89.7	6,080	49.0

Winding Information					Temperature Rating		
Winding Length Per Turn				Wound Coil Dimensions (mm)		Curie Temp: 460°C	
Winding Factor	(mm)	Winding Factor	(mm)	40% Winding Factor	OD	41.2	
					HT	20.3	
0%	37.9	40%	49.9	Completely Full Window	Max OD	45.6	
					Max HT	29.2	
20%	44.9	45%	51.3	Surface Area (mm <sup>2</sup> )		Notes:	
25%	44.9	50%	52.2				
30%	46.1	60%	56.4	Unwound Core			3,500
35%	48.0	70%	60.0	40% Winding Factor			5,800

