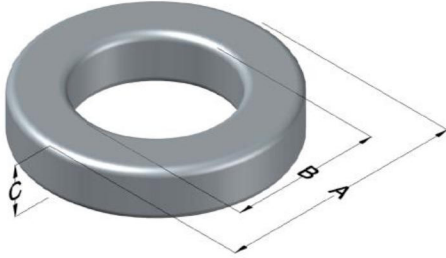




C055117W4

110 Delta Drive
 Pittsburgh, PA 15238
 NAFTA Sales: (1)800-245-3984
 HK Sales : (852)3102-9337
 magnetics@spang.com
 www.mag-inc.com



MPP Permeability (μ)	A_L (nH/T ²)	Core Marking			Coating Color
		Lot Number	Part Number	Inductance Grade	
200	115 ± 8%	XXXXXX	55117W4	X	Gray

Dimensions	Uncoated		Coated Limits			Packaging
	(mm)	(in)	(mm)	(in)		
OD (A)	16.59	0.653	17.27	0.680	max	Bulk Pack 4 bags/box Box Qty= 2000 pcs
ID (B)	10.16	0.400	9.53	0.375	min	
HT (C)	6.35	0.250	7.11	0.280	max	

Electrical Characteristics			Physical Characteristics						
Watt Loss @ 100 kHz, 100mT max(mW/cm ³)	DC Bias min (oersteds)		Voltage Breakdown wire to wire min (V _{AC})	Break Strength min (kg)	Window Area W _A (mm ²)	Cross Section A _e (mm ²)	Path Length L _e (mm)	Volume V _e (mm ³)	Weight (g)
	80%	50%							
1050	15.0	28.0	1250	23.0	71.2	19.2	41.2	791	7.0040

Winding Information				Wound Coil Dimensions (mm)		Temperature Rating		
Winding Length Per Turn				40% Winding Factor		OD	18.8	Curie Temp: 460 °C
Winding Factor	(mm)	Winding Factor	(mm)	Completely Full Window		HT	10.1	Coating Temp (Continuous to): 200 °C
				Surface Area (mm ²)		Max OD	23.7	Notes: W4 stabilization: Controlled stabilization with Inductance stability limits of +/- 0.25% over temperature range -55°C to +85°C measured at low drive level (<10mT). For power inductors use standard stabilization, A2.
0%	22.0	40%	26.8	Unwound Core		920		
20%	24.4	45%	27.6	40% Winding Factor		1,300		
25%	25.0	50%	28.3					
30%	25.6	60%	29.7					
35%	26.2	70%	31.4					

