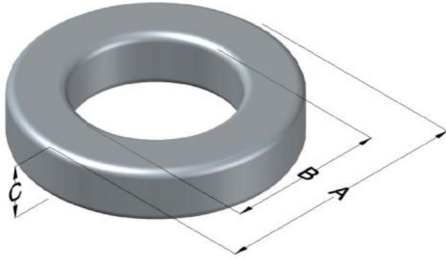




# C055118A2

110 Delta Drive  
 Pittsburgh, PA 15238  
 NAFTA Sales: (1)800-245-3984  
 HK Sales : (852)3102-9337  
 magnetics@spang.com  
 www.mag-inc.com



MPP Permeability ( $\mu$ )	$A_L$ (nH/T <sup>2</sup> )	Core Marking			Coating Color
		Lot Number	Part Number	Inductance Grade	
160	92 $\pm$ 8%	XXXXXX	55118A2	X	Gray

Dimensions	Uncoated		Coated Limits			Packaging
	(mm)	(in)	(mm)	(in)		
OD (A)	16.59	0.653	17.27	0.680	max	Bulk Pack 4 bags/box Box Qty= 2000 pcs
ID (B)	10.16	0.400	9.53	0.375	min	
HT (C)	6.35	0.250	7.11	0.280	max	

Electrical Characteristics			Physical Characteristics						
Watt Loss @ 100 kHz, 100mT max(mW/cm <sup>3</sup> )	DC Bias min (oersteds)		Voltage Breakdown wire to wire min (V <sub>AC</sub> )	Break Strength min (kg)	Window Area W <sub>A</sub> (mm <sup>2</sup> )	Cross Section A <sub>e</sub> (mm <sup>2</sup> )	Path Length L <sub>e</sub> (mm)	Volume V <sub>e</sub> (mm <sup>3</sup> )	Weight (g)
	80%	50%							
900	21.0	39.0	1250	23.0	71.2	19.2	41.2	791	6.9360

Winding Information					Temperature Rating	
Winding Length Per Turn				Wound Coil Dimensions (mm)		Curie Temp: 460 °C
Winding Factor	(mm)	Winding Factor	(mm)	40% Winding Factor		Coating Temp (Continuous up to): 200 °C
				OD	18.8	
				HT	10.1	Notes:
				Completely Full Window		
				Max OD	23.7	
0%	22.0	40%	26.8	Max HT	15.2	
20%	24.4	45%	27.6	Surface Area (mm <sup>2</sup> )		
25%	25.0	50%	28.3	Unwound Core		920
30%	25.6	60%	29.7	40% Winding Factor		1,300
35%	26.2	70%	31.4			

